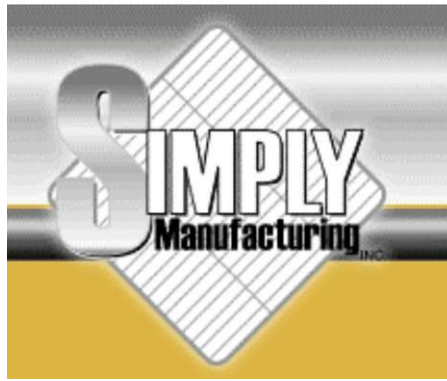


OEM Replacement Parts Catalog

March 2018





Simply Manufacturing was founded in 2000 and produced trees, trucks, cages and screens for plants throughout North America.

We have in-house design capabilities and a fully vertically integrated factory that produces high quality equipment at very competitive prices. In addition to racks, screens, meat sticks, vats, bolo trucks and ham press towers we can also custom fabricate a wide range of equipment. We work exclusively in stainless steel using state of the art equipment.

We also have a large spare parts inventory. We specialize in replacement continuous chain for ALKAR in-line and serpentine systems, stainless steel X-348 chain for KSI machines as well as chain for RAPIDPAK packaging equipment. The quality of our spare parts is equal or greater than the OEMs' at a cost savings ranging from 20%-60%. We carry large inventories of parts that can be shipped the same day to anywhere in the world. If you would like us to add a part to our inventory please contact us and we will do our best to accommodate your request.

CONTACT INFORMATION

Simply Manufacturing, Inc.
1800 Prairie Street
Prairie du Sac, WI 53578

Ph: 608 643-6656
Fax: 608 644-1828
Email: sales@simplymfg.com
Website: www.simplymfg.com

Jane Dolphin

Tony Renger

Tony Scribner

Inside Part Sales

Continuous Chain Sales

Product Carrier Sales

Simply Manufacturing, Inc. ("SMI") is unrelated to Alkar-RapidPak, Inc. ("Alkar"). SMI products are not produced by, associated with, or endorsed by Alkar. ALKAR® is a registered trademark of Alkar-RapidPak, Inc.
--

Table of Contents

Section 1 Batch Equipment Parts

Section 2 Alkar Continuous Line Parts

Section 3 KSI Continuous Line Parts

Section 4 RapidPak Parts

Section 5 Product Trucks, Trees, Cages & Towers

Section 6 Product Sticks

Section 7 Casters & Wheels

Section 8 Trolleys

Section 9 Product Screens

Section 10 Price List

Batch Equipment Parts

Inflatable, Nitrile, Door Gasket fabric reinforced, custom made to specific size for doors

Large oven sizes
Simply part # 1300
Alkar part # 81000



Small oven size, 229" inflatable
Simply part # 1299
Alkar part # 45132



Gasket Retainer

Used for small oven door gasket

Simply part # 1302
Alkar part # 45102



Gasket, 1" x 2" Silicone Sponge

Simply part # 1249
Alkar part # 15020



Simply Manufacturing, Inc. ("SMI") is unrelated to Alkar-RapidPak, Inc. ("Alkar"). SMI products are not produced by, associated with, or endorsed by Alkar. ALKAR® is a registered trademark of Alkar-RapidPak, Inc.

Batch Equipment Parts

Latch, Door

Stainless steel assembly used on inside of oven door

Simply part # 1310

Alkar part # 70353



Nozzle, Brass 1/4"

Oven atomizing nozzle

Simply part # 1328

Alkar part # 66287



Nozzle, 1/4" Stainless Steel

Cold shower spray nozzle

Simply part # 1327

Alkar part # 65990



Simply Manufacturing, Inc. ("SMI") is unrelated to Alkar-RapidPak, Inc. ("Alkar"). SMI products are not produced by, associated with, or endorsed by Alkar. ALKAR® is a registered trademark of Alkar-RapidPak, Inc.

Batch Equipment Parts

Clippard Valve

Used with inflatable door seal

Simply part # 1257

Alkar part # 66296



Air Flow Switch

Pressure activated to provide safety shutdown

Simply part # 1258

Alkar part # 30012



Flowmeter

Monitors water flow to the psychrometer pan

Simply part # 1261

Alkar part # 25109



Simply Manufacturing, Inc. ("SMI") is unrelated to Alkar-RapidPak, Inc. ("Alkar"). SMI products are not produced by, associated with, or endorsed by Alkar. ALKAR® is a registered trademark of Alkar-RapidPak, Inc.

Batch Equipment Parts

Wet Bulb Sock, 4-1/2" x 11-1/2"

Made of 100% cotton for accurate wet bulb reading

Simply part # 1276

Alkar part # 50048



Wet Bulb Sock, 5-1/2" x 5-1/2"

Made of 100% cotton for accurate wet bulb reading

Simply part # 1235

Alkar part # 50044



Wet Bulb Sock, 3" x 5-1/2"

Made of 100% cotton for accurate wet bulb reading

Simply part # 1236

Alkar part # 50040



Wet Bulb Sock, 6" x 6"

Made of 100% cotton for accurate wet bulb reading

Simply part # 1234

Alkar part # 50041



Simply Manufacturing, Inc. ("SMI") is unrelated to Alkar-RapidPak, Inc. ("Alkar"). SMI products are not produced by, associated with, or endorsed by Alkar. ALKAR® is a registered trademark of Alkar-RapidPak, Inc.

Batch Equipment Part

Thermocouple, Type J

Monitors internal temperature of product

Simply part # 1313

Alkar part # 25121



Probe, RTD Insertion

Monitors internal temperature of product

Simply part # 1233

Alkar part # 25163



Probe, RTD Wet/Dry Bulb

Single element sensor

Simply part # 1254

Alkar part # 25201



Probe, RTD

Used to check internal temperature of hot dogs

Simply part # 1298

Alkar part # 25293



Simply Manufacturing, Inc. ("SMI") is unrelated to Alkar-RapidPak, Inc. ("Alkar"). SMI products are not produced by, associated with, or endorsed by Alkar. ALKAR® is a registered trademark of Alkar-RapidPak, Inc.

Batch Equipment Part

Spark Ignitor

For Maxon models 405, 408, 415, 425, and 435

Simply part # 1259

Alkar part # 30632



Flame Rod

For Maxon models 405, 408, 415, 425, and 435

Simply part # 1260

Alkar part # 40097



Fan Blade, 18"

Simply part # 1238

Alkar part # 40148



UV Scanner

Used in combustion safeguard chassis

Simply part # 1297

Alkar part # 31081

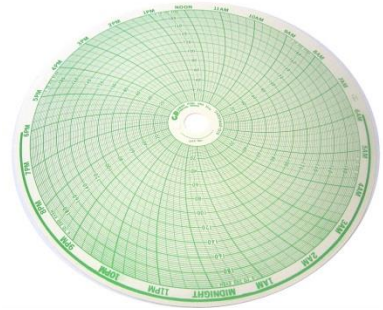


Simply Manufacturing, Inc. ("SMI") is unrelated to Alkar-RapidPak, Inc. ("Alkar"). SMI products are not produced by, associated with, or endorsed by Alkar. ALKAR® is a registered trademark of Alkar-RapidPak, Inc.

Batch Equipment Part

Chart, 24001660- 010

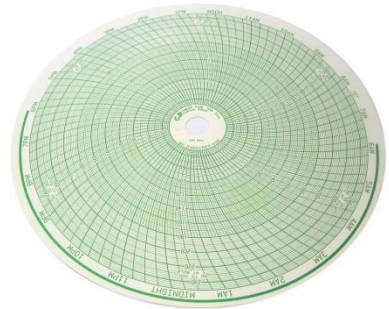
Simply part # 1311



Chart, 24001660- 096

Simply part # 1312

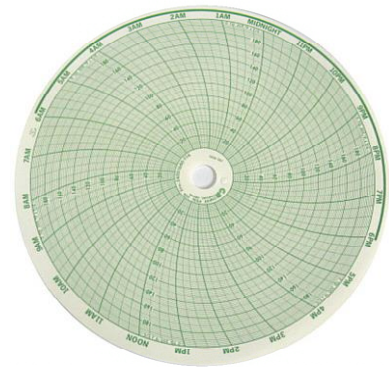
Alkar part # 25136



Chart, 24001660-114

Simply part # 1283

Alkar part # 25139



Simply Manufacturing, Inc. ("SMI") is unrelated to Alkar-RapidPak, Inc. ("Alkar"). SMI products are not produced by, associated with, or endorsed by Alkar. ALKAR® is a registered trademark of Alkar-RapidPak, Inc.

Alkar Continuous Line Parts

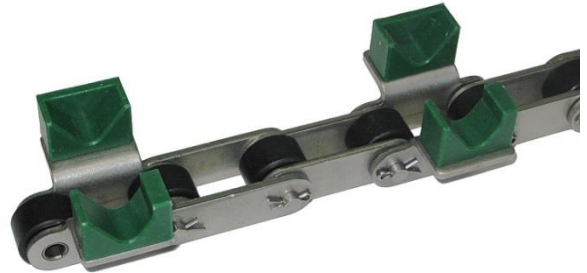
Smokehouse Chain, In-line

C2082 316SS

Fully assembled with carrier blocks for 6" centers. Also available in 4" centers

Simply part # 1232

Alkar part # 83500



Carrier Block – Closed

Used on Inline continuous chain

Simply part # 1228

Alkar part #35253



Carrier Block – Open

Used on Inline continuous chain

Simply part # 1229

Alkar part # 35145



Screw HHCS2-14 x 7/16

Used on Inline continuous chain

Simply part # 1230

Alkar part # 10498

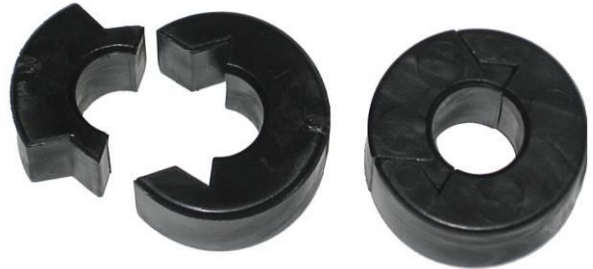


Simply Manufacturing, Inc. ("SMI") is unrelated to Alkar-RapidPak, Inc. ("Alkar"). SMI products are not produced by, associated with, or endorsed by Alkar. ALKAR® is a registered trademark of Alkar-RapidPak, Inc.

Alkar Continuous Line Parts

Split Roller, Black Delrin 2 piece snap-on design

Simply part # 1251
Alkar part # 35496



Link, Chain Carrier Half Used on Inline continuous chain

Simply part # 1255
Alkar part # 35564



Link, Chain Carrier Master Used on Inline continuous chain

Simply part # 1256
Alkar part # 35137



Stick Return Chain

Simply part # 1240
Alkar part # 35559



Simply Manufacturing, Inc. ("SMI") is unrelated to Alkar-RapidPak, Inc. ("Alkar"). SMI products are not produced by, associated with, or endorsed by Alkar. ALKAR® is a registered trademark of Alkar-RapidPak, Inc.

Alkar Continuous Line Parts

Chain, Serpentine 304 SS & 316 SS

#80, #100, & #120

Simply part # - Call for quote



Meat Stick, 61" 17-4 PH

Electro polished, used on Inline systems

Simply part # 1231

Alkar part # 75231



Simply Manufacturing, Inc. ("SMI") is unrelated to Alkar-RapidPak, Inc. ("Alkar"). SMI products are not produced by, associated with, or endorsed by Alkar. ALKAR® is a registered trademark of Alkar-RapidPak, Inc.

KSI Continuous Line Parts

KSI X-348 Assembled Chain

Constructed of precipitation hardened S.S.

9" Product Spacing

Simply part # 1281

12" Product Spacing

Simply part # 1282



Wheel, Trolley 2-1/4" with cage

Simply part # 1271

Alkar/KSI part # 950550



Wheel, Trolley 2-1/4" without cage

Simply part # 1289

Alkar/KSI part # 950552



Bracket 3"

Simply part # 1266

Alkar/KSI part # 95051



Simply Manufacturing, Inc. ("SMI") is unrelated to Alkar-RapidPak, Inc. ("Alkar"). SMI products are not produced by, associated with, or endorsed by Alkar. ALKAR® is a registered trademark of Alkar-RapidPak, Inc.

KSI Continuous Line Parts

Center Link 3"

Simply part # 1267
Alkar/KSI part # 95052



Side Link 3"

Simply part # 1268
Alkar/KSI part # 95053



Rivet, 1/2"

Simply part # 1269
Alkar/KSI part # 95054



"H" Attachment, side link

Simply part # 1291
Alkar/KSI part # 95057



Simply Manufacturing, Inc. ("SMI") is unrelated to Alkar-RapidPak, Inc. ("Alkar"). SMI products are not produced by, associated with, or endorsed by Alkar. ALKAR® is a registered trademark of Alkar-RapidPak, Inc.

KSI Continuous Line Parts

“H” Attachment, center link

Simply part # 1293
Alkar/KSI part # 95058



“H” Attachment, wheel bracket

Simply part # 1292
Alkar/KSI part # 95056



Spacer

Simply part # 1294
Alkar/KSI part # 95061



Bracket Bolt/Nut

Simply part # 1295
Alkar/KSI part # 95059



Washer, chain pin

Simply part # 1290
Alkar/KSI part # 95905



Simply Manufacturing, Inc. (“SMI”) is unrelated to Alkar-RapidPak, Inc. (“Alkar”). SMI products are not produced by, associated with, or endorsed by Alkar. ALKAR® is a registered trademark of Alkar-RapidPak, Inc.

KSI Continuous Line Parts

Cotter pin

Simply part # 1287
Alkar/KSI part # 95904



Cat Chain, Mild Steel with connecting links

160 with S.S. dogs

Simply part # 1278
Alkar/KSI part # 95101



Cat Chain, Stainless Steel with connecting links

160 with S.S. dogs

Simply part # 1288
Alkar/KSI part # 95102



Simply Manufacturing, Inc. ("SMI") is unrelated to Alkar-RapidPak, Inc. ("Alkar"). SMI products are not produced by, associated with, or endorsed by Alkar. ALKAR® is a registered trademark of Alkar-RapidPak, Inc.

RapidPak Parts

Chain # 60 HP (hollow pin, darcotized)

Simply part # 1227

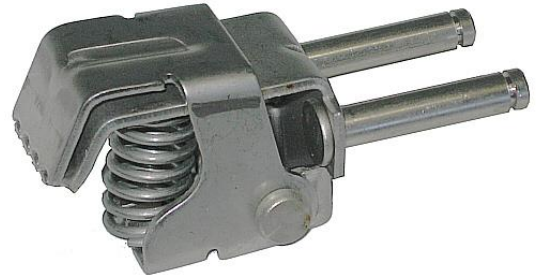
RapidPak part # 02015



Gripper Clip / Spring Assembled

Simply part # 1225

RapidPak part # 10493



Gripper Clip

Simply part # 1223

RapidPak part # 00175



Spring, Heavy Duty

Simply part # 1224

RapidPak part # 00176



Simply Manufacturing, Inc. ("SMI") is unrelated to Alkar-RapidPak, Inc. ("Alkar"). SMI products are not produced by, associated with, or endorsed by Alkar. ALKAR® is a registered trademark of Alkar-RapidPak, Inc.

Section 4

RapidPak Parts

Retaining Clip

Simply part # 1226
RapidPak part # 00188



Circular Rotary Knife – Scalloped Slitter

Simply part # 1413
RapidPak part # 02243



Contour Cutter Blade

Simply part # 1412
RapidPak part # 00186



RapidPak Parts

Chain Clip Opening Guide Track

Simply part # 1404
RapidPak part # 35810



Chain Clip Opening Guide Wear Strip

Simply part # 1414



Chain Clip Opening Guide Base

Simply part # 1415



Spacer, Lay in Roller

Simply part # 1400
RapidPak part # 02032



RapidPak Parts

Exit Clip Opener Scrap Gun Left

Simply part # 1403
RapidPak part # 02424



Exit Clip Opener Scrap Gun Right

Simply part # 1402
RapidPak part # 02425



Chain Guide Exit Clip Opener

Simply part # 1408
RapidPak part # 02266



Clip Chain Toothless Idler

Simply part # 1401
RapidPak part # 50816



RapidPak Parts

Clip Chain Bottom Opening Ramp, Entry End

Simply part # 1407
RapidPak part # 60869



Cam Track - Long

Simply part # 1406
RapidPak part # 02415



Cam Track - Short

Simply part # 1405
RapidPak part # 60873

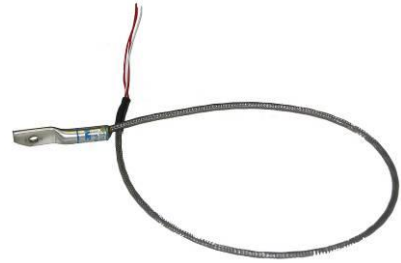


Simply Manufacturing, Inc. ("SMI") is unrelated to Alkar-RapidPak, Inc. ("Alkar"). SMI products are not produced by, associated with, or endorsed by Alkar. ALKAR® is a registered trademark of Alkar-RapidPak, Inc.

RapidPak Parts

Sensor, RTD (18")

Simply part # 1410
RapidPak part # 01115



Heater, 5" 240V 750W, 1/2" Rd

Simply part # 1430
RapidPak part # 00907



Heater, 5-1/2" 240V 750W, 1/2" Rd

Simply part # 1435
RapidPak part # 00909



Heater, 6-1/2" 240V 750W, 1/2" Rd

Simply part # 1431
RapidPak part # 00913



Simply Manufacturing, Inc. ("SMI") is unrelated to Alkar-RapidPak, Inc. ("Alkar"). SMI products are not produced by, associated with, or endorsed by Alkar. ALKAR® is a registered trademark of Alkar-RapidPak, Inc.

RapidPak Parts

Heater, 8" 240V 750W, 1/2" Rd

Simply part # 1432

RapidPak part # 01146



Heater, 9" 240V 750W, 1/2" Rd

Simply part # 1434

RapidPak part # 01047



Heater, 9-1/2" 240V 750W, 1/2" Rd

Simply part # 1433

RapidPak part # 00509



Product Trucks, Trees, Cages & Towers

Standard Meat Truck

4 Station

Simply part # 1273

Alkar part # 45022

5 Station

Simply part # 1274

Alkar part # 45066



Custom Design Product Cages

Simply Manufacturing will custom design product cages to meet your requirements of size, product loading, and weight capacity



Simply Manufacturing, Inc. ("SMI") is unrelated to Alkar-RapidPak, Inc. ("Alkar"). SMI products are not produced by, associated with, or endorsed by Alkar. ALKAR® is a registered trademark of Alkar-RapidPak, Inc.

Product Trucks, Trees, Cages & Towers

Bolo Rack



Ham Press Tower



Simply Manufacturing, Inc. ("SMI") is unrelated to Alkar-RapidPak, Inc. ("Alkar"). SMI products are not produced by, associated with, or endorsed by Alkar. ALKAR® is a registered trademark of Alkar-RapidPak, Inc.

Product Sticks

KSI, 46"

Simply part # 1277



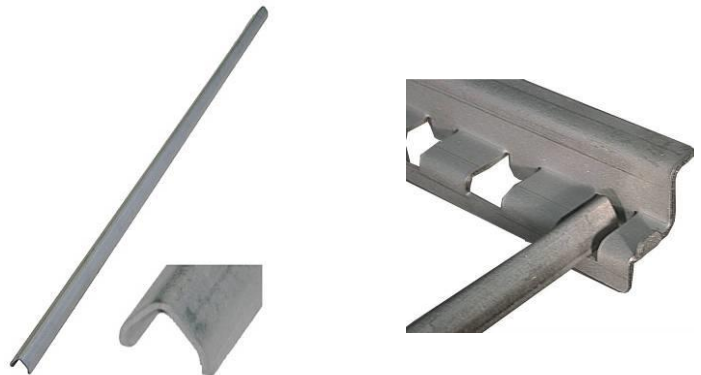
Julian / T-Con



V-Type, 42", 14 Gauge S.S.

Simply part # 1237

Alkar part # 45099



Simply Manufacturing, Inc. ("SMI") is unrelated to Alkar-RapidPak, Inc. ("Alkar"). SMI products are not produced by, associated with, or endorsed by Alkar. ALKAR® is a registered trademark of Alkar-RapidPak, Inc.

Product Sticks

Meat Stick, 61" 17-4 PH

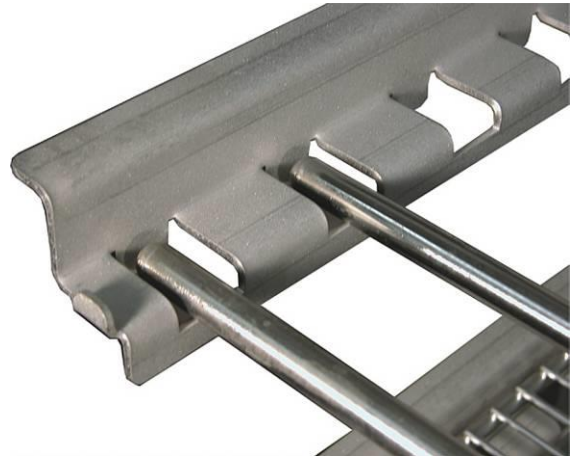
Electro polished, used on Inline continuous systems

Simply part # 1231

Alkar part # 75231



Meat Stick, 42", 17-4 PH



Simply Manufacturing, Inc. ("SMI") is unrelated to Alkar-RapidPak, Inc. ("Alkar"). SMI products are not produced by, associated with, or endorsed by Alkar. ALKAR® is a registered trademark of Alkar-RapidPak, Inc.

Casters and Wheels

Caster, Rigid, Zinc / Maxim Wheel 8" x 2"

Simply part # 1241

Alkar part # 75358



Caster, Swivel, Zinc / Maxim Wheel 8" x 2"

Simply part # 1242

Alkar part # 75359



Caster, Rigid, S.S./ Maxim Wheel 8" x 2"

Simply part # 1243



Caster, Swivel, S.S. / Maxim Wheel 8" x 2"

Simply part # 1244



Simply Manufacturing, Inc. ("SMI") is unrelated to Alkar-RapidPak, Inc. ("Alkar"). SMI products are not produced by, associated with, or endorsed by Alkar. ALKAR® is a registered trademark of Alkar-RapidPak, Inc.

Casters and Wheels

Caster, Rigid, S.S. / Nylon Wheel 8" x 2"

Simply part # 1245



Caster, Swivel, S.S. / Nylon Wheel 8" x 2"

Simply part # 1246



Caster Wheel Only, Maxim 8" x 2"

Simply part # 1247



Caster Wheel Only, Nylon Wheel 8" x 2"

Simply part # 1248



Trolleys

Trolley, SS Heavy Duty

3000 # capacity

Simply part # 1280



Wheel, 304 S.S. , 5/8" Bore, Closed Bearing

Simply part # 1284



Wheel, 304 S.S. , 1/2" Bore, Closed Bearing

Simply part # 1285



Product Screens

Screen, Mesh, 42" x 42" Std

Simply part # 1272

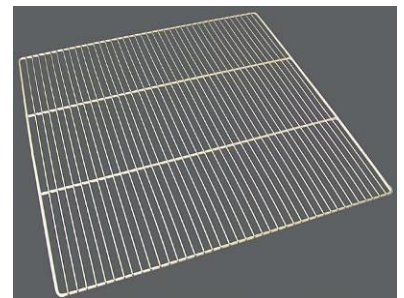
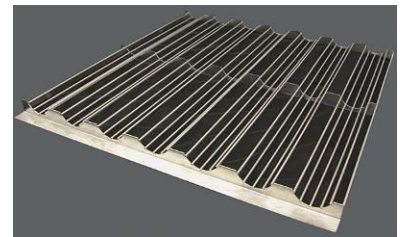
Alkar part # 45122

Also available in heavy duty per your requirements



Custom Design Product Screens

Simply Manufacturing will work with you to design the exact screens that your operation requires for your specific needs and processing methods



Simply Manufacturing, Inc. ("SMI") is unrelated to Alkar-RapidPak, Inc. ("Alkar"). SMI products are not produced by, associated with, or endorsed by Alkar. ALKAR® is a registered trademark of Alkar-RapidPak, Inc.