

REPLACEMENT PARTS & ACCESSORIES CATALOG 2020



The Simply Offering...

- *Replacement Parts: Batch Smoke Houses, Continuous Cooking Systems, Packaging Equipment*
- *Accessories: Trees, Trucks, Cages, Press Racks, Ham Mold Racks, Screens, Vats, V-Mags, Meat Sticks*



The Simply Story

Simply Manufacturing had its origin in the year 2000, as a small weld and finish shop out of McFarland, WI. At first it was just two men doing contract manufacturing for Wolf Appliances. They didn't have sophisticated technology or a large investment backing, but they were known for quality craftsmanship and prompt work.

In 2000 when a young manager for Alkar-Rapidpak encountered a problem, a company they contracted with, was going out of business and was about to leave Alkar with a pile of unfinished work -- he called the people he knew could get it done for them.

This began a fruitful relationship between Alkar and Simply Manufacturing, and set the tone for Simply's dedication to customer service.

In 2003, Simply moved to a small site outside of Prairie du Sac WI, and added an electropolish room, bead-blast room, and resistance welder to our equipment. The next five years saw the addition of a hydraulic brake press, shear, and a 2000 watt laser. As we continued to integrate our capabilities and increase efficiency, our reputation as a quality manufacturer of meat processing accessories grew.

In 2006, the same manager from Alkar whose project was saved by Simply Manufacturing in 2000, approached the owner and purchased half of the company. With this new partnership, Simply Mfg. added a spare parts line for batch houses, smokehouses, and packaging equipment and began to sell our products directly to meat processors.

From 2006 onward Simply gradually expanded, acquiring new customers as we continued to refine our manufacturing processes.

In 2013 we moved to our current location at 1800 Prairie St., Prairie du Sac, WI and added a 4000 watt laser.

In 2014, we added pickling and passivation tanks to our electropolish room to augment our metal finishing capabilities, and in 2017 invested in two robotic welding arms. Currently, with one building holding all of our equipment under one roof, and investments in robotic technologies we are now able to streamline our fabrication and reduce time and material waste.

We now provide meat trucks, trees, screens, and cages to beef, pork, and poultry processors across the U.S.. Additionally, Simply Manufacturing offers:

- in-house finishing services to other metal shops
- perform contract manufacturing for processing equipment fabricators
- distributes spare parts for assembly lines throughout the meat, dairy, cheese and fish industries, and;
- offer custom manufacturing for all things stainless.

A common thread runs through these myriad services: Simply, a dedication to go above and beyond the customer's expectations of service and execution, and to stand by the work which we do.

This value has remained with Simply throughout our existence as a company and continues to guide us today. Since the early days in McFarland, our workforce has increased, the site and technology have changed and the diversity of our products and services has multiplied, but we still come to work to make a high-quality product that works well for our customers.

The Simply Team



Replacement Parts & Accessories

Smokehouse Equipment Replacement Parts	4
Inflatable Fabric Reinforced Door Gaskets, Inflatable Non-Reinforced Door Gasket, Door Seal Gasket Retainer, Non-Inflatable Silicon Door Gasket, Silicon RTV Adhesive, Door Latch, Clippard Valve, Wet Bulb Socks, Spray Nozzles, Type J Thermocouple, RTD Insertion Probe, RTD Monel Wet/Dry Bulb Probe, RTD Wet/Dry Bulb Probe—Duplex, RTD Wet/Dry Bulb Probe, RTD Hot Dog Probe, Spark Ignitor, Flame Rod, Fan Blade, UV Scanner, Link V-Belt, Retain Rings, Flowmeter, Circular Recorder Charts, Recorder Ink, Recorder Pens, Desiccant Packets	
Alkar™ Continuous In-Line Smokehouse Replacement Parts	10
In-Line Chain - C2082, Carrier Blocks, Carrier Screws, Split Rollers, Chain Carrier Half Link, Chain Carrier Master Link, Stick Return Chain, Meat Stick, Serpentine Pin Chain	
KSI Continuous Smokehouse Replacement Parts	12
Assembled Chain, Trolley Wheel, Trolley Wheel Bracket, Center Link, Side Link, Rivet, H-Attachments, Spacers, Bracket Bolts, Corner Chain Roller, Corner Chain Roller Bolts	
RapidPak™ Packaging Replacement Parts	15
#60 HP Chain, Gripper Clip Assembled, Gripper Clip, Heavy Duty Gripper Clip Spring, Gripper Clip Chain Retainer Clip, Circular Rotary Knife, Contour Cutter Blade, Chain Clip Bottom Opening Ramp—Entry End, Exit Clip Opener Scrap Gun Left, Exit Clip Opener Scrap Gun Right, Chain Guide Exit Clip Opener, Chain Clip Opening Guide Track Wear Strip, Chain Clip Opening Guide Track Base, Chain Clip Opening Guide Track Assembly, Lay In Roller Spacer, Clip Chain Toothless Idler, Cam Tracks, RTD Sensor, Electric Heaters	
RePak Packaging Replacement Parts	18
Gripper Chain, Gripper Clip, Gripper Clip Spring, Slitter Knife, Electric Heater	
MultiVac™ Packaging Replacement Parts	19
Gripper Chain, Gripper Clip, Gripper Clip Spring, Slitter Knife, Electric Heater	
Product Carriers	20
Ham Press Tower, Product Molds, Nesting Tree, Bacon Belly Tree, Nesting Truck, Deli Meat Truck, Pan Truck, Beef Jerky-Bacon Truck, Deli Meat Rack, Hanging Product Basket	
Casters and Wheels	27
Swivel, Rigid, Zinc Frame, Stainless Steel Frame, Maxim Wheel, Nylon Wheel, Polyolefin Wheel	
Product Screens	28
Mesh Wire, One-Way Wire, Bolo, Upper Fence, V-Style, Heavy Duty, Tree, Half, Fold-Down, Spring, Expanded	
Smokehouse Meat Sticks	32
V-Style, Round Bar, Hollow Tube, KSI, In-Line, Hook Shelf	
Trolleys	34
Double Wheel, Single Wheel, Bearing Trolley Wheel, Trolley Hook	
Vats, V-Mag Carts	35
Vats, V-Mag Carts	

Most items are in-stock and available for immediate shipment.
Please call for the latest price information.



DISCLAIMER

Simply Manufacturing, Inc. ('SMI') is unrelated to Alkar-RapidPak, Inc. ('Alkar'). SMI products are not produced by, associated with, or endorsed by Alkar. ALKAR® is a registered trademark, and J-CON™ and RAPIDPAK™ are unregistered trademarks, of Alkar-RapidPak, Inc." . Multivac is a registered trademark of Multivac Sepp Haggenmuller.

Food Processing Batch Ovens & Smokehouses

It's imperative for your smokehouse to continually be operational. Simply has many of the consumable parts required to provide preventative maintenance and eliminate unwanted downtime.



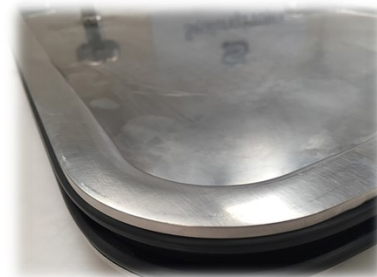
Inflatable Nitrile Reinforced Door Seal Gasket

Nitrile material is fabric reinforced for extended life endured in the harsh environments within meat processing facilities. The fabric reinforcement provides maximum strength, durability and shape retention. Temperature range -20F to 250F degrees. Good resistance to water and steam with excellent color stability. Excellent resistance to heat, liquid smoke and chemicals. Very good flexibility at low temperatures.

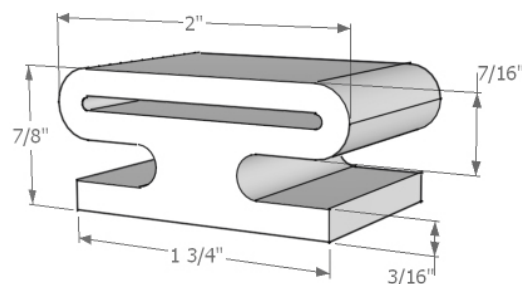
Includes (1) brass pneumatic air nozzle connected to 24" extended rubber tubing.

Typical pounds per square inch is 20 - 30. Maximum operating 45 psi.

Alternate Lengths Available Upon Request



Simply Part #	Length
1300	Specify



Inflatable Nitrile Non-Reinforced Door Seal Gasket

Nitrile material is non-reinforced. Temperature range -20F to 250F degrees. Good resistance to water and steam with excellent color stability. Excellent resistance to heat and ozone. Very good flexibility at low temp.

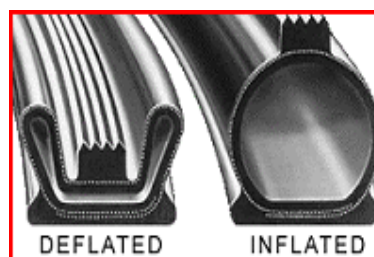
Includes (1) brass pneumatic air nozzle connected to 24" extended rubber tubing.

Typical pounds per square inch is 2. Maximum operating 5 psi.

This door seal gasket requires the use of retainer to secure the gasket in-place. The door seal gasket retainer listed on the next page.



Simply Part #	Alkar Part #	Length
1299	45132	229"



Retainer for Inflatable Door Seal Gasket

Mounted into oven door recess to accommodate Inflatable door seal gasket. Material is Neoprene. Provided with additional length, cut to size during installation.

Specify Length

Simply Part #	Alkar Part #	Gasket Size
1302	45102	7/8"
		1-1/2"
Alternate Sizes Available Upon Request		



Non-Inflatable Silicon Sponge Gasket

Closed Cell Sponge Silicone Medium Density. Color is red orange, with a skin (extruded). Temperature resistant to 450°F. (intermittent). High Temperature Silicone RTV (Use #732 adhesive listed below).

Specify Length

Simply Part #	Alkar Part #	Width x Height
1249	15020	2" x 1"
		1-1/2" x 3/4"
Alternate Profile Sizes Available Upon Request		



Silicone RTV Adhesive

#732 RTV silicone adhesive for use with silicone door gasket. Sold in 10.3 ounce tube or case of 12 tubes.

Simply Part #	Alkar Part #	Quantity
1243	22190	1
1244		12



Door Latch

Constructed of 304 stainless steel materials. Used on batch oven doors, retain in closed position.

Simply Part #	Alkar Part #
1310	70353



Clippard Valve

For use with inflatable door seal gasket. Model #MJTV-3-ENP. (1) Inlet Port, (1) Outlet Port, (1) Exhaust Port and (1) Switch.

Simply Part #	Alkar Part #
1257	66296



Air Flow Switch

Pressure activated to effect a safety shutdown or prevent burner start-up in the event the main blower is not running while purging the oven.

Simply Part #	Alkar Part #
1258	30012



Wet Bulb Socks

Sized to fit any instrument probe for smokehouse humidity controls. They are made of 100% cotton material. We will custom make any size to fit your needs. The socks are one of the most crucial. In some cases it can make the difference between turning a profit and not. If the product shrinkage is not controlled, there will be no uniformity in the product from one cook cycle to another. It's recommended that the socks are changed after every cook cycle. They should be changed at least once per day.



Simply Part #	Alkar Part #	Width x Length
1276	50048	4-1/2" x 11-1/2"
1388		4-1/2" x 6"
1235	50044	5-1/2" x 5-1/2"
1236	50040	3" x 5-1/2"
1234	50041	6" x 6"
1392		9" x 6"

Spray Nozzles

Replacement nozzles for batch and continuous ovens and smokehouses. Typical applications include cold water shower, brine shower and cleaning manifolds located throughout the ovens including exhaust ducting.



Simply Part #	Alkar Part #	Type	Size	Angle/Deg	Material
1327	65990	Spray Nozzle	1/4HH-SS6.5		316SS
1328	66287	Atomizing	1/8-1.4@40	150	Brass

Type J Thermocouple

Monitors internal temperature of product. Includes 4" long, 0.095" diameter probe constructed of type 304 stainless steel hypodermic materials. Includes 25' long 3-Wire configuration with Teflon coated lead wires and 2-1/2" split lead terminations. Class A Accuracy, 100 Ohms. High temperatures up to 500F.

Simply Part #	Alkar Part #
1313	25121



RTD Insertion Probe

Monitors internal temperature of product. Includes 6' long, 0.18" diameter probe constructed of type 304 stainless steel hypodermic materials. Includes 28' long 3-Wire configuration with Teflon coated lead wires with 30" split lead terminations. Class A Accuracy, 100 Ohms. High temperatures up to 392F.

Simply Part #	Alkar Part #
1233	25163

**RTD Monel Wet / Dry Bulb Probe**

Monitors Dry Bulb and Wet Bulb temperatures and sends signal back to the PLC. Includes 15' long, 0.25" diameter probe constructed of Monel materials. Includes 15' long 2-Wire configuration with Teflon coated lead wires with 30" split lead terminations. Class A Accuracy, 100 Ohms. High temperatures up to 392F.

Simply Part #	Alkar Part #
1395	25267

**RTD Wet / Dry Bulb Probe—Duplex**

Monitors Dry Bulb and Wet Bulb temperatures and signal information to the PLC. Includes 15' long, 0.25" diameter probe constructed of type 316 stainless steel materials. Includes 20" long, Duplex 3-Wire (6-Wires Total) configuration with Teflon coated lead wires with 30" split lead terminations. Class A Accuracy, 100 Ohms. High temperatures up to 392F.

Simply Part #	Alkar Part #
1315	25127

**RTD Wet / Dry Bulb Probe**

Monitors Dry Bulb and Wet Bulb temperatures and signal information to the PLC. Includes 15' long, 0.25" diameter probe constructed of type 316 stainless steel materials. Includes 20' long, 2-Wire configuration with Teflon coated lead wires with 30" split lead terminations. Class A Accuracy, 100 Ohms. High temperatures up to 392F.

Simply Part #	Alkar Part #
1254	25201

**RTD Hot Dog Probe**

Monitors internal temperature of product. Includes 4" long, 0.095" diameter probe constructed of type 304 stainless steel hypodermic materials. Includes 25' long 3-Wire configuration with Teflon coated lead wires and 2-1/2" split lead terminations. Class A Accuracy, 100 Ohms. High temperatures up to 500F.

Simply Part #	Alkar Part #
1298	25293



Spark Ignitor

For Maxon Burner.

Simply Part #	Alkar Part #
1259	30632

**Flame Rod**

For Maxon Burner.

Simply Part #	Alkar Part #
1260	40097

**Fan Blade—18"**

Constructed of stainless steel materials. 18" New Style. The fan has been balanced. Material finish is glass bead blasted.

Simply Part #	Alkar Part #
1238	40148

**Ultra-Violet (UV) Flame Scanner**

Fireye UV1A6 Photocell Scanner is recommended for detecting flames from standard fuel, some waste gas and light oil fuels. Detects flames from heavier oils; but the unburned fuel shroud and/or atomization shroud can block the passage of the UV from the flame zone to the UV tube which can result in burner and/or burner trips. Includes 1/2" NPT threaded connection with 6 foot long 3-wire shielded leads.

Simply Part #	Alkar Part #
1297	31081

**Link V-Belt**

Used on 18" and 24" Diameter Exhaust Fans. Power Twist—YA-4L-1/2".

Simply Part #	Alkar Part #
1448	35525

**Retaining Ring**

Used on Alkar Serpentine Carrier Pan mounting shafts. Constructed 18-8 stainless steel materials.

Simply Part #	Alkar Part #	Part #	Size
1331	107060	WSM-62-S02	5/8"
1332	12690	WSM-100-S02	1"



Flowmeter

Monitors water flow to the psychrometer pan. Range 5-50 Water (cc/min). Model RMA-32-SSV. Approximate Dimensions: 4-9/16"H x 3/4"W x 1-3/16"L. Includes (2) 1/4" IPS connections on backside.

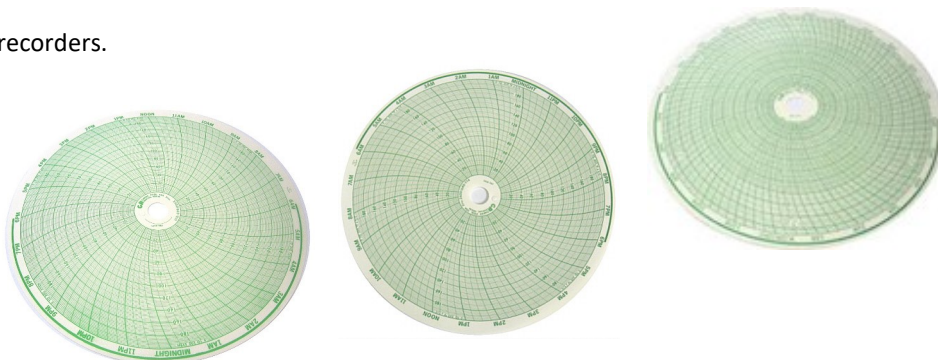


Simply Part #	Alkar Part #
1261	25109

Circular Recorder Paper Charts

Instrument charts for use in all makes of recorders.

- 100-Charts per box
- Degrees F
- 12"Diameter



Simply Part #	Alkar Part #	Manufacturer	Description	Type/Range	Chart #
1311		Honeywell	0-24 Hours	0-200 Linear	24001660-010
1312	25136	Honeywell	0-24 Hours	50-250 PT Bulb	24001660-096
1393	25291	Honeywell	0-24 Hours	0-150 PT Bulb	24001660-090
1283	25139	Honeywell	0-24 Hours	0-0 Type J	24001660-114

Circular Chart Recorder Ink

For use with All Chart Recorders. 2.5 ounces per bottle.

Simply Part #	Pen Color
1440	Red
1441	Blue



Circular Recorder Pens & Arms

Honeywell, Partlow Replacement Felt Tip Pens—Packaged 6 per pack

Simply Part #	Pen Color
1450	Red
1451	Blue



Desiccant Packets

Indicating Silica Gel Blue. Includes (1) 0.88 lb Bag.

Simply Part #	Alkar Part #
1389	65094



ALKAR™ Continuous In-Line Spare Parts

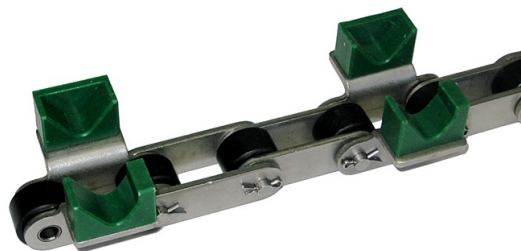
This system provides continuous operation for hot dogs therefore limited downtime for maintenance is required. The conveyor chain is the primary source of downtime due to the excessive varying temperatures and corrosive environment. Simply has provided complete chain replacements when excessive chain stretch occurs, but also individual components to accommodate focused failures and preventative maintenance programs.



In-Line Chain—C2082

The chain links, washers, carrier screws and cotter pins are constructed of type 316 stainless steel materials and the carrier blocks are Celcon and rollers are Delrin materials—black in color. The chain provided in 10' matched left and right sections to accommodate handling during installation.

Simply Part #	Alkar Part #	Pitch
1306	15020	4"
1232	83500	6"



Carrier Block—Open

Mounted on the inside links of the chain to accept smoke sticks. Constructed of UHMW Materials. Includes (2) blind holes to accept 7/16" screw.

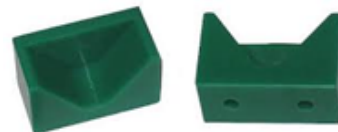
Simply Part #	Alkar Part #
1228	35253



Carrier Block—Closed

Mounted on the outside links of the chain to retain the smoke sticks between the chains. Constructed of UHMW Materials, green in color. Includes (2) blind holes to accept 7/16" screw.

Simply Part #	Alkar Part #
1229	35145



Carrier Screw—HHCS2-14 x 7/16

Used to secure carrier blocks to chain guides. Requires (2) hex-head screws per carrier block. Constructed of 316 stainless steel materials.

Simply Part #	Alkar Part #
1230	10498



Split Roller— 2-Piece Replacement

Replaces existing 1-piece roller. The 2-piece design allows for snap-on to existing pins without chain disassembly. Injected molded Black Delrin materials.

Simply Part #	Alkar Part #
1251	35496



Chain Carrier Half Link

The link, connecting pin, cotter pin are constructed of 316 stainless steel materials and includes (1) Delrin roller.

Simply Part #	Alkar Part #
1255	35564



Chain Carrier Master Link

The (1) link, (1) link plate, (2) cotter pins are constructed of 316 stainless steel materials.

Simply Part #	Alkar Part #
1256	35137



Stick Return Chain

Chain provides conveyed return of the in-line smokehouse meat stick from unloading area to loading area. Constructed of high temperature black nylon material.

Simply Part #	Alkar Part #
1240	35559



In-Line Smokehouse Meat Stick

61" long, 1/2" diameter, 17-4 PH stainless steel with electropolished finish. The heat treated process provides material high strength, hardness and strength while hanging product.

Simply Part #	Alkar Part #
1231	70591



Serpentine Pin Chain

Roller Chain constructed of stainless steel and includes extended pins for mounting carrier pans.

Specify Following Information:

- 316 OR 304 Stainless Steel
- Pin Pitch
- Pin Extension Length
- Chain Size: #80, #100, #120



KSI Continuous Line Spare Parts

This system provides continuous operation for hot dogs therefore limited downtime for maintenance is required. The conveyor chain is the primary source of downtime due to the excessive varying temperatures and corrosive environment. Simply has provided complete chain replacements when excessive chain stretch occurs, but also individual components to accommodate focused failures and preventative maintenance programs.



X-348 Assembled Chain

Includes the trolley wheels, wheel brackets, center links, side links, "H" attachments and rivets. The rivets are adjoined by use of stainless steel cotter pin and washer. The desired product spacing will include the specific "H" brackets incrementally. The trolley wheel bracket, center link, side link, "H" attachments, rivets are investment cast of precipitated hardened grades of stainless steel materials.

Simply Part #	Product Spacing
1281	9"
1282	12"



Trolley Wheel w/ Cage

Bearing consists of dual ball bearing assemblies. Bearings are constructed of 302 stainless steel. Bolt and nut size is 3/8-16 and constructed of 316 stainless steel. Inner races are 17-4 stainless steel and outer Hub diameter is 2-1/4". Internal bearing cage constructed of UHMW materials, white in color.

Simply Part #	Alkar Part #
1271	950550



Trolley Wheel w/o Cage

Bearing consists of dual ball bearing assemblies. Bearings are constructed of 302 stainless steel. Bolt and nut size is 3/8-16 and constructed of 316 stainless steel. Inner races are 17-4 stainless steel and outer Hub diameter is 2-1/4".

Simply Part #	Alkar Part #
1289	950552



Trolley Wheel Bolt & Nut

Replacement for Trolley Wheel, 316 stainless steel. 3/8"-16 x 2" Long—Only 5/8" Threaded. AL6N material provides added corrosion resistance to increase longevity.

Simply Part #	Alkar Part #	Material
	950720	316 Stainless Steel
		AL6XN



Trolley Wheel Bracket—Single Side

Connects to trolley wheel which engages KSI trolley on one end and the other connects to the adjoining chain links attachments or spacer..

Simply Part #	Alkar Part #
1266	95051



Center Link—3"

Located between product spacing trolley wheel brackets to connect the chain by links and chain rivets and provide alignment and product spacing. If product mounting is not required refer to Center Link "H" Attachment.

Simply Part #	Alkar Part #
1267	95052

**Side Link—3"**

Located between product spacing trolley wheel brackets to connect the chain by links and chain rivets and provide alignment and product spacing. If product mounting is not required refer to Side Link "H" Attachment. Requires (2) side links to complete a link.

Simply Part #	Alkar Part #
1268	95053

**Side Link "H" Attachment**

Replaces the Side Link where Product Spacing is required.

Simply Part #	Alkar Part #
1291	95057

**Center Link "H" Attachment**

Replaces the Center Link where Product Spacing is required.

Simply Part #	Alkar Part #
1293	95058

**Wheel Bracket "H" Attachment**

Located between the trolley wheel mounting brackets to provide alignment and attach product hanger. If product mounting is not required refer to Spacer.

Simply Part #	Alkar Part #
1292	95056

**Spacer**

Constructed of 304 stainless steel material. Located between the trolley wheel mounting brackets to provide separation unless spacing requires product, then refer to Wheel Bracket "H" Attachment.

Simply Part #	Alkar Part #
1294	95061

**Chain Rivet**

Used to connect the links and brackets together..

Simply Part #	Alkar Part #
1269	95054



Bolt and Nut

Constructed of 316 stainless steel material. Hex head bolt is 5/16-18 x 7/8" long, includes hex head nut.



Simply Part #	Alkar Part #
1295	95059

Washer

Constructed of 316 stainless steel material. Accommodates 5/16" bolt.



Simply Part #	Alkar Part #
1290	95905

Cotter Pin

Constructed of 316 stainless steel material. Pin is 3/16" x 1" long.



Simply Part #	Alkar Part #
1287	95904

Stainless Steel Cat Chain w/ Connecting Links

The roller chain is #160, constructed of 304 stainless steel materials. The dogs are 17-4 PH stainless steel material and heat treated. Chain provided in 10' lengths.



Simply Part #	Alkar Part #
1288	95102

KSI Corner Chain Roller Assembly

Constructed of 17-4 PH stainless steel materials. Includes ball bearings retained with plastic cage.

Dimensions: 3"OD x 1-7/8"W.



Simply Part #	Alkar Part #	Bolt Bore
1502	95316	3/8"
1503	95302	1/2"

KSI Corner Chain Roller Bolt Assembly

Constructed of 18-8 stainless steel materials. The design includes internal egress with mid-point openings for grease depositing throughout via the grease zerk installed on end of bolt. Includes hex nut and washer.

Simply Part #	Alkar Part #	Bolt Size
1504	95301	3/8"
1505	95303	1/2"



RapidPak™ Spare Parts

Simply is premier supplier for spare parts for RapidPak packaging systems. The following spare parts are direct replacements to the following Models: RP-25 RP-30, RP-45, RP-50, RP-55, RP-75.



Roller Chain—#60HP

Constructed of Nickel Plated material, with 0.974" hollow pin length. Darcotized coated to improve corrosion resistance. Includes (1) connecting link for each chain section.

Simply Part #	RapidPak Part #
1227	02015



Gripper Clip Assembled

Constructed of 304 stainless steel material.

Simply Part #	RapidPak Part #
1225	10493



Gripper Clip Only

Constructed of 304 stainless steel material.

Simply Part #	RapidPak Part #
1223	00175



Gripper Clip Spring—Heavy Duty

Constructed of 302 stainless steel material.

Simply Part #	RapidPak Part #
1224	00176



Retainer Clip—#60

Constructed of 304 stainless steel material with electropolish finish.

Simply Part #	RapidPak Part #
1226	00188



Circular Rotary Knife

Stainless steel material with polished surface finish. Serrated outer perimeter.

Simply Part #	RapidPak Part #
1413	02243



Contour Cutter Blade V 15/16

Constructed of Type 440 stainless steel material.

Simply Part #	RapidPak Part #
1412	00186



Chain Clip Bottom Opening Ramp—Entry End

Constructed of wear resistant, blue UHMW. Approximate Overall Dimensions: 7/8"W x 1-3/4"H x 7"L.

Simply Part #	RapidPak Part #
1407	60869

**Exit Clip Opener Scrap Gun Left**

Constructed of wear resistant, blue UHMW. Approximate Overall Dimensions: 5/8"W x 3-3/4"H x 6-7/8"L.

Simply Part #	RapidPak Part #
1403	02424

**Exit Clip Opener Scrap Gun Right**

Constructed of wear resistant, blue UHMW. Approximate Overall Dimensions: 5/8"W x 3-3/4"H x 6-7/8"L.

Simply Part #	RapidPak Part #
1402	02425

**Chain Guide Exit Clip Opener**

Constructed of wear resistant, blue UHMW. Approximate Overall Dimensions: 1-1/4"W x 11/16"H x 3"L.

Simply Part #	RapidPak Part #
1408	02266

**Chain Clip Opening Guide Track Wear Strip**

Constructed of wear resistant, blue UHMW. This is replacement part for assembly Part #1404. Approximate Overall Dimensions: 15/16"W x 1/2"H x 8-5/8"L.

Simply Part #
1414

**Chain Clip Opening Guide Track Base**

Constructed of wear resistant, blue UHMW. This is replacement part for assembly Part #1404. Approximate Overall Dimensions: 2-7/16"W x 3/4"H x 8-5/8"L.

Simply Part #
1415

**Chain Clip Opening Guide Track Assembly**

Includes the above Chain Clip Opening Guide Track Base and (2) Chain Clip Opening Guide Track Wear Strips assembled with stainless steel hardware. Provides mechanical means to direct the Gripper Clip in the open position to allow for film release. Directs the Gripper Clip into the open position to allow for film release.

Simply Part #	RapidPak Part #
1404	35810



Lay In Roller Spacer

Constructed of wear resistant, blue UHMW. Approximate Overall Dimensions: 3-1/2"OD x 1/8"W—1"ID Hole.

Simply Part #	RapidPak Part #
1400	02032



Clip Chain Toothless Idler

Constructed of wear resistant, blue UHMW. Approximate Overall Dimensions: 4"OD x 15/16"W—2"ID Hole.

Simply Part #	RapidPak Part #
1401	50816



Cam Track

Constructed of 17-4PH stainless steel material, heat treated to H900. The design includes double edged, allows for rotating and using on both surfaces. Electropolish finish.

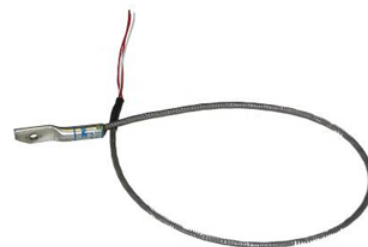
Simply Part #	RapidPak Part #	Size
1405	60873	Short
1406	02415	Long



RTD Sensor

Includes size #10 electrical lug 18" long, 3-wire 0.25" diameter probe constructed of type 316 stainless steel materials. Includes 12" long, 3-Wire configuration with stranded Teflon cable with stainless steel braided lead wires and 2-1/2" split lead terminations. Class B Accuracy, 100 Ohms. Temperature Rating: -50C to 200C.

Simply Part #	RapidPak Part #
1410	01115



Heater

The probe is constructed of stainless steel with sealed and protected 2-wire cable with 12" lead.

Simply Part #	RapidPak Part #	Volts	Watts	Probe Length
1429		240	750	4-1/2"
1430	00907	240	750	5"
1435	00909	240	750	5-1/2"
1436		240	750	5-3/4"
1437	00910	240	750	6"
1431	00913	240	750	6-1/2"
1432	01146	240	750	8
1434	01047	240	750	9
1433	00509	240	750	9-1/2"
1439	09060	240	750	10"
Alternate Volts, Watts and Lengths Available Upon Request				



Repak Spare Parts

Simply is premier supplier for spare parts for Repak packaging systems. The following spare parts are direct replacements to all thermoforming models.



#8B Gripper Chain Assembled with Gripper Clips

The chain is constructed of nickel plated steel materials, the gripper clips are constructed of stainless steel materials and the springs are constructed of mild steel and nickel plated.



Simply Part #
1501

Gripper Chain Connecting Link

Connects two ends of chain together.

Simply Part #
1511



Gripper Clip

Replacement for damaged and worn clips resulting in film gripping concerns.

Simply Part #
1506



Gripper Clip Spring—Heavy Duty

Replacement for damaged and worn resulting in film gripping concerns.

Simply Part #
1507



Circular Rotary Knife

Constructed of 440 stainless steel material.

Simply Part #
1508



Electric Heater Element

Tubular design with sheath constructed of Incoloy materials. Electrical: 240 V, 1,500 Watts. Includes 34" long leads on each end.

Dimensions: 0.33" Diameter x 4"W x 11-3/4"L

Simply Part #
1510



MultiVac™ Spare Parts

Simply is premier supplier for spare parts for MultiVac packaging systems. The following spare parts are direct replacements to all thermoforming models.



#10B Gripper Chain Assembled with Gripper Clips

The chain is constructed of nickel plated steel materials, the gripper clips are constructed of stainless steel materials and the springs are constructed of mild steel and nickel plated.



Simply Part #
1540

Gripper Chain Connecting Link

Connects two ends of chain together.

Simply Part #
1546



Gripper Clip Only

Replacement for damaged and worn clips resulting in film gripping concerns.

Simply Part #
1541



Gripper Clip Spring

Replacement for damaged and worn resulting in film gripping concerns.

Simply Part #
1542



Circular Rotary Knife

Constructed of 440 stainless steel material. Designed in 2-pieces to facilitate installation.

Simply Part #
1545



Electric Heater Element

Tubular design with sheath constructed of Incoloy materials. Electrical: 240 V, 1,500 Watts. Includes 34" long leads on each end.



Simply Part #	MultiVac Part #	Volts	Watts
1543	19.188.1010.50	240	1,550
1544	19.188.1010.83	240	1,550
1547	19.188.1010.84	240	1,550
1548	19.188.1010.91	240	1,550

Ham Press Towers

Are you cooking hams or deli meats? The Simply Press Rack is the only solution for you. The racks are built to NAMI standards and withstand the aggressive cooking and cleaning environments. To guarantee that even the most stringent sanitary guidelines are met, all of our racks are 100% hand-welded. Simply's superior design provides you with confidence on meeting production goals.



Standard Design Features:

- Type 304 Stainless Steel Construction
- Tubing and Angle Framework
- All Structural Continuous Welds
- Glass Bead-Blast Finish
- Pickle Passivation Finish

Optional Design Features:

- Type 316 Stainless Steel Construction
- Various Mold Designs
- Weld-On Digits
- Open Channel Framework

Ham Press Tower

Designed to provide compression of meat products.

Standard Features:

- 1/4 Turn Ratchet
- Heavy Duty Springs
- Molds w/ Removable Covers



Specify Following Information:

- Length x Width x Height
- Quantity of Shelves
- Shelf Spacing / Separation

Product Molds / Loaf Baskets

Provides profile and aesthetics of products.

Standard Features:

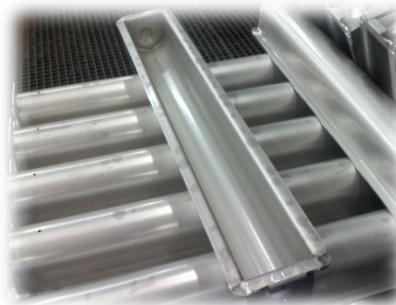
- Weld-in or drop-in dividers
- Base includes weep holes—low point drain—probe access
- Profiles:
 - D-Shape
 - Rectangle Shape
 - Square Shape
 - Large Radius Corner
 - Inserts / Dividers

Option Features:

- Handles for handling

Specify Following Information:

- Length x Width x Height
- Profile — Orientation
- Finish Type



Hanging Product Basket

Designed for bagged products secured in basket and placed in water cook process.

Applications:

- Hot Water Product Immersion

Standard Features:

- Angle or Tubing Framework
- Mesh or Perforated Materials
- Centered Hook for Lifting

Option Features:

- Forklift Understructure
- Portable Carrier w/ Casters
- Fold-Down Entry—Sides

Specify Following Information:

- Length x Width x Height
- Material: Expanded, Perforated, Etc.
- Access Door Location



In-House Blasting

This capability provides efficiencies to product and project flow within the facility and eliminates the need for costly and uncontrolled outsourcing. This allows us full control of critical and every changing project timelines and customer expectations.

The overall size of this space allows for both large products and multiple smaller products to increase flow thru capacities.

- 10' W x 24' L x 10'H
- Contained and Controlled Environment
- Crushed and Beaded Glass is Primary Media



Trees, Cages

Cooking hot dogs or smoking sausage? No matter the product, our Smoke Trees are the only solution for you. These highly adaptable trees are portable and can also be put on a trolley system. Plus, each tree is built to NAMI standards and withstand the sweltering environment in a smoke house. To guarantee that even the most stringent sanitary guidelines are met, all of our trees are 100% continuously welded.



Standard Design Features:

- Type 304 Stainless Steel Construction
- Angle or Tubing Framework
- 100% Continuous Welds (Framework)
- Glass Bead-Blast Finish
- Heavy Duty Trolley Design
- Station Arms Rodded / Shelf Design

Optional Design Features:

- Type 316 Stainless Steel Construction
- Various Shelf Designs
- Weld-On Digits
- Pickle Passivation
- Open Channel Framing

Nesting Tree

Designed to accommodate variety of hanging products utilizing removable meat sticks or removable product screens however when removed the trees would have nesting capabilities. If static product screens are included then trees will not nest.

Applications:

- Bacon, Ribs, Bologna

Standard Features:

- Easy to clean
- Open design

Optional Features:

- Rigid shelves
- Removable shelves
- Single or Dual trolley designs

Specify Following Information:

- Length x Width x Height
- Quantity of Stations
- Shelf Type



Bacon Belly & Ham Tree

Designed to accommodate bacon belly hanging via comb. Notches on shelf bars provide product separation.

Applications:

- Bacon, Ham

Standard Features:

- Notches for Bacon Hooks
 - 3/4" Wide / Spaced Every 1-1/4"

Optional Features:

- Various removable shelf designs:
 - Secured onto Stations
- Alternate notching size—spaces
- Adjustable station heights
- Single or Dual trolley designs



Specify Following Information:

- Length x Width x Height
- Quantity of Hanging Stations
- Station Spacing
- Notch Profile and Separation

Bolo Tree

Designed to position bologna in cradle to provide consistent loading and allow for optimum air-flow around all product surfaces.

Applications:

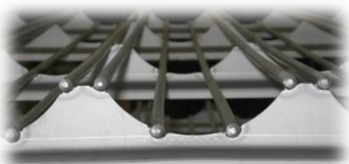
- Bologna

Standard Features:

- Open channel framework
- Lightweight design—increased product loading

Optional Features:

- Various quantity of shelves
- Alternate quantity of shelves
- Single or Dual trolley designs



Specify Following Information:

- Length x Width x Height
- Quantity of Stations
- Product Profile
- Product Spacing

Racks, Trucks

Whether you're preparing turkey breasts, logs of deli meat, hams for smoking, or simply transporting these food items, Simply Product Racks are the perfect solution for your operation. These racks and trucks are designed and built to meet NAMI standards and to endure the harsh environments and continued handling on the job. Every rack and truck is continuously welded to ensure there are no pesky pits or crevices, so direct product contact is not a concern.



Standard Design Features:

- Type 304 Stainless Steel Construction
- Angle, Tubing or Open Formed Framework
- 100% Welded—All Structural Continuous
- Glass Bead-Blast Finish
- Heavy Duty Casters or Heavy Duty Foot Design
- Station Arms Accepts Smoke Sticks or Screens

Optional Design Features:

- Type 316 Stainless Steel Construction
- Various Shelf Designs
- Weld-On Digits
- Pickle Passivation
- Alternate Caster Designs
- Open Channel Framing
- Caster Shields

Nesting Truck

Designed to nest multiple trucks together when transporting, storing or cleaning to reduce floor space. The station arms are designed to accommodate meat sticks and product screens.

Applications:

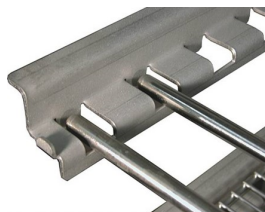
- Hot Dogs, Bologna, Brisket, Salami, Pepperoni, Bacon

Standard Features:

- Station Arms Notched and Lipped On Ends
- Used with 42" Smoke Sticks
- Accepts Solid, V-Type and Hollow Smoke Sticks
- Minimum 12" Clearance to Floor
- Minimum Side Obstructions
- Maximize Product Volumes
- Accepts Product Screens
 - Smoke Sticks Used for Added Support

Optional Features:

- Alternate Station Arm Designs and Configurations



Dimensions: 72"H x 46-1/2"L x 42"W

Alternate Designs, Sizes, Configurations and Quantity of Stations Upon Request.



Standard 5-Station Truck		
Simply Part #	Alkar Part #	Weight
1274	45066	175

Standard 4-Station Truck		
Simply Part #	Alkar Part #	Weight
1273	45022	165

Deli Meat Truck

Designed to accommodate Log, Square Alternate Shape Products.

Applications:

- Bologna, Ham, Salami, Pepperoni

Standard Features:

- Weld-In Shelves
- Minimum 12" Clearance to Floor

Optional Features:

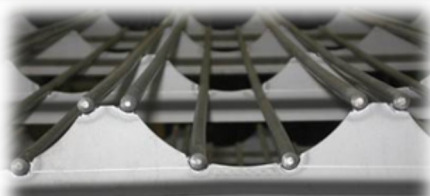
- Removable Shelves
- Various Shelf Designs:
 - Wire Mesh, Expanded, Etc.
- Forklift Understructure

Optional Castor Shields—Available on All Trucks.



Specify Following Information:

- Length x Width x Height
- Quantity of Shelves
- Shelf Type and Pattern
- Shelf Wire Spacing / Separation



Pan Truck

Designed to provide separation of products or increased shelf height accommodates product vertically, like ribs.

Applications:

- Pastrami, Ribs

Standard Features:

- Weld-In Shelves
- Minimum 12" Clearance to Floor

Optional Features:

- Removable Shelves
- Forklift Understructure
- Alternate Perforation Openings
- Expanded Material Shelves



Specify Following Information:

- Length x Width x Height
- Quantity of Shelves
- Shelf Spacing / Separation
- Shelf Material: Expanded, Perforated, Etc.



Beef Jerky / Bacon Truck

Designed with specific distance between shelves to accommodate increased volumes of product. This design accommodates half-screens to load from both sides.

Applications:

- Bacon, Beef Jerky

Standard Features:

- Designed to accept Full or Half Screens
- Solid Round Bar Shelves

Optional Features:

- Various Shelf Designs:
Wire Mesh, Expanded, Etc.
- Angle or Formed Angle Shelves
- Forklift Understructure

Optional Caster Shields—Available on All Trucks.

Specify Following Information:

- Length x Width x Height
- Quantity of Stations



Fixed Screen Rack

Designed for lengths of various profile lunch meats on each shelf with adequate screen separation to ensure effective air-flow.

Applications:

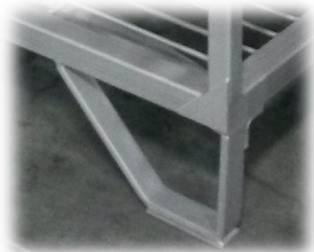
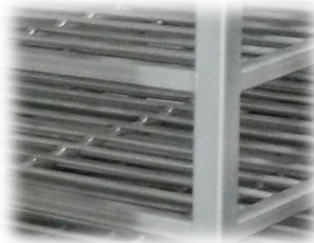
- Ham, Sausage, Salami, Pepperoni, Brisket, Ribs, Chicken Breast

Standard Features:

- Weld-In or Removable Shelves
- Alternate Shelf Separation

Option Features:

- Alternate Screen Designs
- Stackable Designs / Upper Retaining Pockets



Specify Following Information:

- Length x Width x Height
- Quantity of Shelves
- Shelf Wire Pattern

Caster and Wheels

Transporting Smoke Trucks, Racks, Tables or Vats utilizing the proper casters is critically important for each application. Simply has extensive offering beyond the standard offering below.

Caster Assemblies

- 8" ϕ x 2" Wide Wheel
- Mounting bracket w/ (4) elongated mounting holes
- Rigid and swivel designs



Simply Part #	Rigid Or Swivel	Frame Material	Wheel Material	Bearing Material	Maximum Temp. Rating	Load (LBS) Rating
	Swivel	SS	Hi-Temp Glass Filled Nylon w/3/4" Plain Bore	SS Bushing	-40F to 400F	1200
	Rigid	SS	Hi-Temp Glass Filled Nylon W/ 3/4" Plain Bore	SS Busing	-40F to 400F	1200
4103	Swivel	SS	Polyolefin (Black)	Delrin	-40F to 180F	1000
4102	Rigid	SS	Polyolefin (Black)	Delrin	-40F to 180F	1000
1246	Rigid	SS	Solid Nylon 6 (Brown)	Delrin	-45F to 250F	1100
1245	Swivel	SS	Solid Nylon 6 (Brown)	Delrin	-45F to 250F	1100
4674	Rigid	Zinc Plated	Solid Nylon 6 (Brown)	Delrin	-45F to 250F	1100
4675	Swivel	Zinc Plated	Solid Nylon 6 (Brown)	Delrin	-45F to 250F	1100
1243	Rigid	SS	Maxim Wheel (Black Glass Filled Nylon)	Delrin	-45F to 180F	1100
1244	Swivel	SS	Maxim Wheel (Black Glass Filled Nylon)	Delrin	-45F to 180F	1100
1242	Rigid	Zinc Plated	Maxim Wheel (Black Glass Filled Nylon)	Delrin	-45F to 180F	1100
1241	Swivel	Zinc Plated	Maxim Wheel (Black Glass Filled Nylon)	Delrin	-45F to 180F	1100

Wheels

- 8" ϕ x 2" Wide wheel

Simply Part #	Material	Color	Temp Rating
1247	Maxim	Black	180F
1248	Nylon	Brown	250F



Caster Replacement Parts

- Bearings / Bushings
- Frames / Forks
- Caster Shields
- Axles & Nuts
- Wheels

Product Screens

Simply designs and manufactures a wide range of oven screens for use in food processing smokehouses and ovens. Screens are fabricated to exacting quality and regulatory standards, and designed to increase productivity and product yields. Screens are TIG-welded together, making them safe to use with any meat and cheese product. Screens can be custom designed to meet the needs of your specific application. Constructed of high grade stainless steel, our screens meet all NAMI Sanitary Equipment Design Requirements and are durable enough to withstand the most demanding environments.



Standard Design Features:

- Type 304 Stainless Steel Construction
- Wires Resistance Welded
- Electropolish Finish
- Pickle Passivation

Optional Design Features:

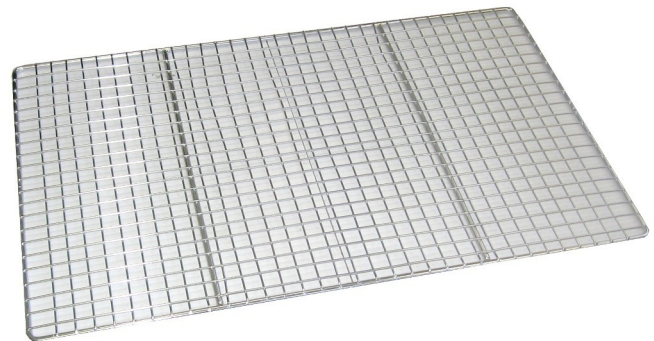
- Type 316 Stainless Steel Construction
- Seal Welded Seams

Standard Mesh Screen

Designed for medium product weight.

Standard Features:

- 0.80" to 1/8" ϕ Mesh material
- 3/8" ϕ or 1/2" ϕ Frame and cross rod material
- 1/2" x 1/2" Mesh openings (or larger)



Simply Part #	Alkar Part #	Width x Length
1272	45122	42"W x 42"L
		38"W x 42"L
		28"W x 42"L
Alternate Size and Configuration Upon Request		

Standard One-Way Wire Screen

Designed for medium product weight.

Standard Features:

- 1/8" ϕ to 1/4" ϕ Face wires
- 3/8" ϕ or 1/2" ϕ Frame and cross rod material
- 1/2" to 1" Wire spacings

Simply Part #	Width x Length
	42"W x 42"L
	30"W x 42"L
	28"W x 42"L
Alternate Size and Configuration Upon Request	



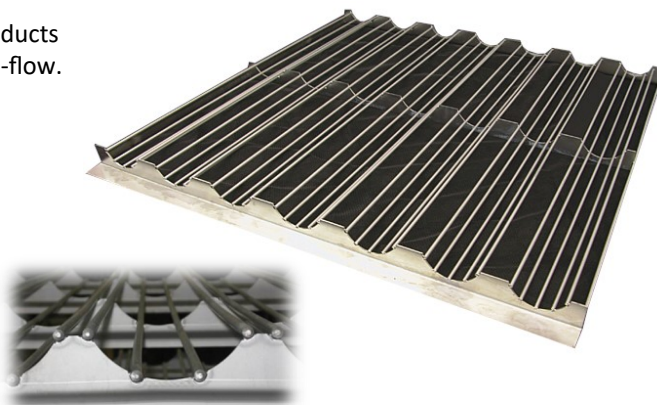
Custom Bolo Screen

Designed with v-profile wire to accommodate bolo or other log products to eliminate product contact and provide separation to improve air-flow.

Standard Features:

- 3/16" Wire rod material
- 14-Gauge face plates and cross material
- Face / cross material continuously welded

Simply Part #	Positions	Width x Length
	7	42"W x 42"L
	6	38"W x 42"L
Alternate Size and Configuration Upon Request		



Screen with Upper Fence—Retains Product

Designed to retain product on the screen. Fences can be incorporated into all screen types.

Standard Features:

- 1/8" ϕ Mesh rod material
- 3/8" ϕ Frame, cross and upper rod material
- Frame and cross supports continuously welded

Simply Part #	Width x Length
	42" x 42"
	39" x 42"
Alternate Size and Configuration Upon Request	



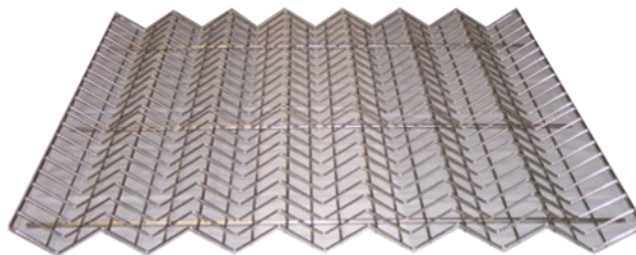
V-Screens

Designed with v-profile wire to accommodate bolo or other log products to eliminate product contact and provide separation to facilitate air-flow.

Standard Features:

- 1/8" ϕ Mesh rod material
- 3/8" ϕ Cross rod material
- Resistance Welded

Simply Part #	Positions	Width x Length
	7	42" x 42"
	7	39" x 42"
Alternate Size and Configuration Upon Request		



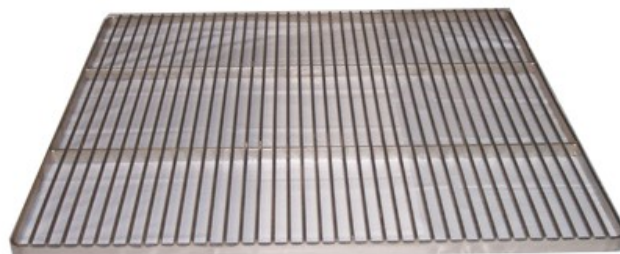
Heavy Duty Screens

Designed for heavy products.

Standard Features:

- 3/16" ϕ Face wire material
- Flat bar perimeter and cross bar material

Simply Part #	Width x Length
	42" x 42"
	39" x 42"
Alternate Size and Configuration Upon Request	

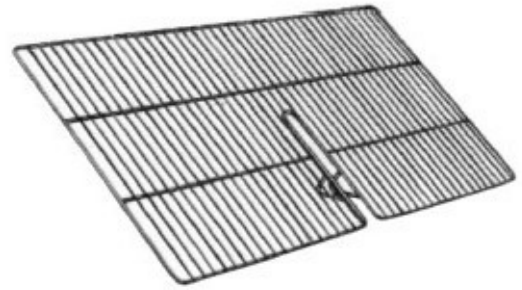


Tree Screens

Designed with centered opening area to insert onto existing trees, around center post to provide dual purpose of the tree to accommodate alternate products.

- Mesh rod material
- Frame and cross rod material
- Face / cross rods 100% welded

Simply Part #	Width x Length
	21"W x 42"L
	20"W x 42"L
Alternate Size and Configuration Upon Request	



Half Screens

Designed for trucks, racks for product separation and ergonomics while loading and unloading.

- Mesh rod material
- Frame and cross rod material
- Face / cross rods 100% Welded

Simply Part #	Width x Length
	21"W x 42"L
Alternate Size and Configuration Upon Request	



Fold-Down Fixed Screens—Welded In-Place Only

Designed to open fold-downs for loading and unloading of product and when closed secures product on screen during transfer and cooking.

Standard Features:

- 1/8"Ø Mesh rod material
- Face / cross rods 100% welded

Simply Part #	Width x Length
	42" x 42"
	40" x 42"
Alternate Size and Configuration Upon Request	



Seal Welding Touch Points

When product integrity, cleaning and quality are concerns. Provide 100% seal welding around all wires.

Standard Features:

- Improved Rigidity
- Improved Robustness
- Improved Life Cycle
- Improved Cleanability
- Improved Sanitary Design



Spring Press Screens

Designed to press product between two screens by use of multiple springs.

Standard Features:

- 1/8" ϕ Mesh rod material
- 3/8" ϕ Frame and cross rod material
- 1/2" x 1/2" Mesh openings
- Face / cross rods 100% welded
- Springs located to provide compression

Specify Following Information:

- Length x Width
- Wire Pattern & Spacing
- Initial Product Separation Height
- Final Product Separation Height
- Quantity of Springs Required



Expanded Material Screen

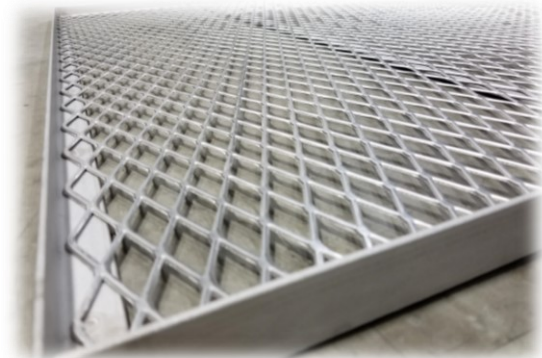
Designed for all types, configurations and size products. Excellent for accommodating weighted products.

Standard Features:

- Perimeter angle material border—100% welded
- Flat bar or round bar cross supports
- Expanded / Mesh material tack welded to angle

Specify Following Information:

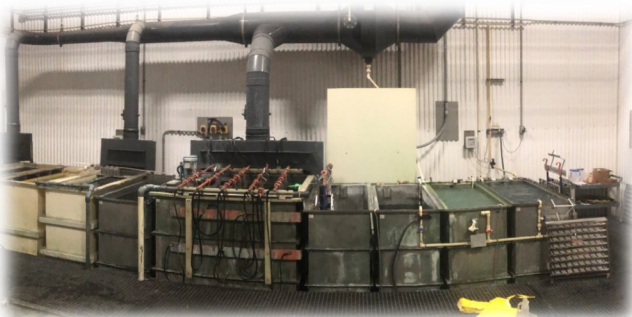
- Length x Width
- Wire Pattern
- Wire Spacing



In-House Pickle Passivation and Electropolish

This capability provides efficiencies to product and project flow within the facility and eliminates the need for costly and uncontrolled outsourcing. This allows us full control of critical and ever changing project timelines and customer expectations.

- Large overhead access door
- Contained and controlled environment
- Primarily solution for passivation is Pickle
- Reclamation of solutions
- Forklift accessible
- Overhead hoist



Smokehouse Meat Sticks

When cooking hot dogs, smoking sausage or drying sausage, our Smoke Sticks are the only solution for you. Designed to meet the NAMI standards and your specific application.



Standard Bell & V-Type—42"

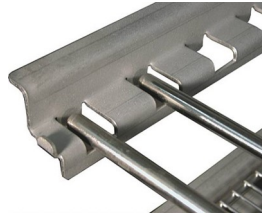
Designed for hanging various products on racks. Provides consistent product separation.

Standard Features:

- Type 304 Stainless steel construction
- 14-Gauge material
- 2B Material finish
- Tumble deburred to remove sharp edges

Optional Features:

- Alternate lengths
- Alternate gauge material
- Electropolish finish
- Notched for specific product location / separation



Simply Part #	Alkar Part #	Length
1237	45090	42"
Custom Designs and Lengths Available Upon Request		

Smokehouse Meat Stick

Designed for hanging various products on racks, or used on continuous In-Line oven by use of positioning on carrier blocks.

Standard Features:

- 17-4 PH Stainless steel construction
- Heat Treated to H900 to provide increased rigidity
- 1/2" Solid round bar
- Electropolish finish

Optional Features:

- Alternate lengths
- Alternate diameters
- Alternate materials
- Pickle passivation



Simply Part #	Alkar Part #	Diameter	Length
1231	70591	1/2"	61"
7043		1/2"	42"
Custom Diameters and Lengths Available Upon Request			

KSI Stick—46"

Designed for hanging various products on continuous KSI Cook System.

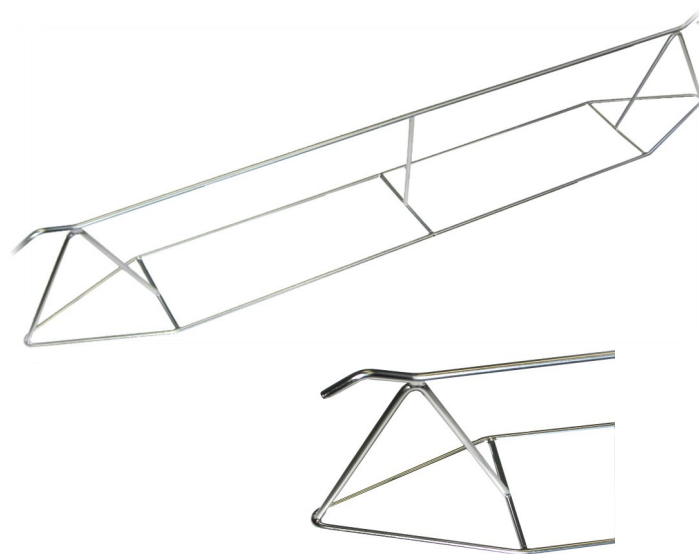
Standard Features:

- 304 Stainless steel construction
- 3/8" Diameter solid rod
- Electropolish finish
- Hooks on both ends

Optional Features:

- Alternate lengths
- Alternate designs

Simply Part #
1277

**Hollow Tubular—Flattened Ends**

Designed for hanging various products while providing product separation.

Standard Features:

- 304 Stainless steel construction
- 3/4", 7/8" and 1" Diameter
- Ends are flattened and welded

Options:

- Pickle passivation finish
- Electropolish finish
- Glass bead blast finish

**Specify Diameter, Length and Finish****Hook Shelf**

Designed to provide vertical product hanging separation in the drying or cooking process. The shelf is designed to accommodate existing and new carts and racks. The design includes heavy duty perimeter material to support heavy loads including heavy gauge hooks welded fully to cross materials.

Applications:

- Drying, Dehydrating and Cooking

Standard Features:

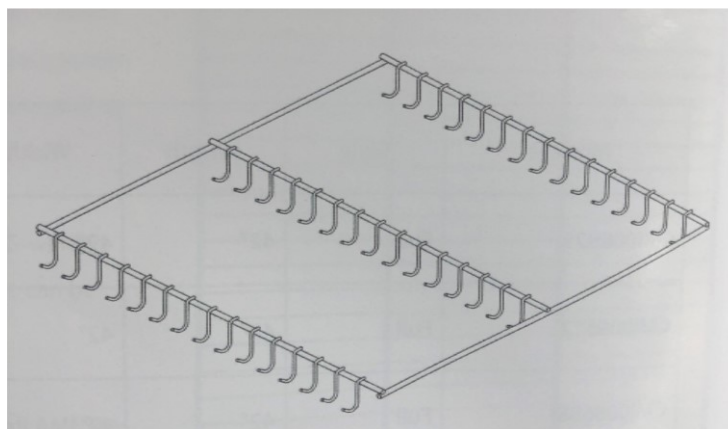
- 304 Stainless steel construction
- Solid bar perimeter / cross bars
- Hooks round bar w/ radius
- Pickle passivation finish

Optional Features:

- Bead blast finish
- Electropolish finish

Specify Following Information:

- Length x Width
- Quantity of Rows
- Quantity of Hooks Per Row



Trolleys

When transferring product trees throughout facility the trolley provides ease of movement reducing operator fatigue and ergonomics.

Wheel Trolley—Heavy Duty

Frame materials are constructed of solid Type 304 stainless steel.

Standard Features:

- Stainless steel construction
- Capacity: 3,000 LBS
- Includes:
 - (2) Wheels
 - (2) J-Strap—1/2" x 2"
 - (1) Upper connecting bar
 - (1) Lower connecting bar w/ Hold
 - Mounting hardware



Standard Features:

- Stainless steel construction
- Capacity: 1,500 LBS
- Includes:
 - (1) Wheel
 - (1) J-Strap—1/2" x 2"
 - Mounting hardware



Optional Features:

- Swivel hook
- Electropolish finish

Specify Following Information:

- **Wheel Bore Size**
- **Hardware Size**
- **Trolley Height**
- **Trolley Width**

Trolley Parts

- J-Strap
- Top Bar
- Bottom Bar
- Hardware



Bearing Trolley Wheel

Hardened stainless steel construction. The wheels are 4" Diameter with deep grooves for use on 3/8" or 1/2" wide rail bars.

Simply Part #	Bore Size
4610	1/2"
4297	5/8"



Trolley Hook

Constructed of 316 stainless steel. Standard 3/4"Ø hook design. Electropolish to a bright, smooth finish. Alternate styles and sizes available.

Simply Part #
4454



Vats, V-Mag Carts

Engineered to withstand the typical food processing facility harshness of continuous use and aggressive chemical cleaning environment. Each unit is built to NAMI standards and sanitary design. Simply provides standard and custom designs to meet your specific application requirements.



Vats

Designed to provide transfer of meat products to and from processing stations.

Standard Features:

- Type 304 stainless steel construction
- 2B Material finish interior and exterior
- 12-Gauge sidewall / 10-gauge bottom head
- Interior TIG welds / exterior MIG welds
- Glass bead-blast exterior finish / interior finished to USDA standards
- 2" radius corners for ease of cleaning
- Open foot design

Optional Features:

- Weld-on digits
- Closed foot design
- Forklift understructure
- Stacking guides (rigid legs only)
- Removable plastic lids
- Low point drain ports
- Pickle passivation
- Alternate material / weld finishes



Capacity #	ID Dimensions	OD Dimensions
2,000	38"W x 49"L x 36"H	40"W x 51"L x 42"H
Custom Designs and Sizes Available Upon Request		

V-Mag Carts – 400# & 600#

Designed to provide transfer of meat products to and from processing stations.

Standard Features:

- Type 304 Stainless steel construction
- 2B Material finish interior with welds ground smooth
- Glass bead-blast exterior finish
- 14-Gauge material
- All continuous welds
- (4) 2"W x 6" Polyolefin wheels

Optional Features:

- Push handle
- Alternate material / weld finishes
- Removable plastic lid



Capacity #	ID Dimensions	OD Dimensions
400	26"W x 28"L x 20"H	28"W x 29"L x 28"H
600	26"W x 28"L x 30"H	28"W x 29"L x 38"H
Custom Designs and Sizes Available Upon Request		



Racks | Trees | Cages | Trucks | Press Racks | Baskets | Product Screens | Molds



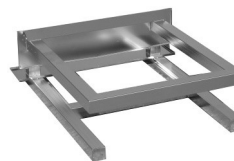
Smokehouse Spare Parts | ALKAR Continuous Spare Parts | RapidPak, MultiVac, Repak



Vats | V-Mag Carts | Smokehouse Meat Sticks | Trolleys | Meat Hooks



Passivation | Electropolishing | Glass Bead Blasting | Contract Manufacturing



SIMPLY MANUFACTURING, INC.

1800 Prairie Street
Prairie du Sac, WI 53578

Phone: 608-643-6656
Fax: 608-644-1828

