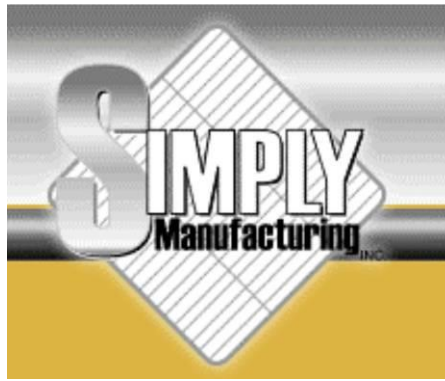




## March, 2016





Simply Manufacturing was founded in 2000 and produced trees, trucks, cages and screens for plants throughout North America.

We have in-house design capabilities and a fully vertically integrated factory that produces high quality equipment at very competitive prices. In addition to racks, screens, meat sticks, vats, bolo trucks and ham press towers we can also custom fabricate a wide range of equipment. We work exclusively in stainless steel using state of the art equipment.

We also have a large spare parts inventory. We specialize in replacement continuous chain for ALKAR in-line and serpentine systems, stainless steel X-348 chain for KSI machines as well as chain for RAPIDPAK packaging equipment. The quality of our spare parts is equal or greater than the OEMs' at a cost savings ranging from 20%-60%. We carry large inventories of parts that can be shipped the same day to anywhere in the world. If you would like us to add a part to our inventory please contact us and we will do our best to accommodate your request.

## **CONTACT INFORMATION**

Simply Manufacturing, Inc.  
1800 Prairie Street  
Prairie du Sac, WI 53578

Ph: 608 643-6656  
Fax: 608 644-1828  
Email: [sales@simplymfg.com](mailto:sales@simplymfg.com)  
Website: [www.simplymfg.com](http://www.simplymfg.com)

Jane Dolphin

Inside Part Sales

Tony Renger

Continuous Chain Sales

Tony Scribner

Product Carrier Sales

# **Table of Contents**

**Section 1 Batch Equipment Parts**

**Section 2 Alkar Continuous Line Parts**

**Section 3 KSI Continuous Line Parts**

**Section 4 RapidPak Parts**

**Section 5 Product Trucks, Trees, Cages & Towers**

**Section 6 Product Sticks**

**Section 7 Casters & Wheels**

**Section 8 Trolleys**

**Section 9 Product Screens**

**Section 10 Price List**

## Batch Equipment Parts

**Inflatable, Nitrile, Door Gasket fabric reinforced, custom made to specific size for doors**

Large oven sizes  
Simply part # 1300  
Alkar part # 81000



Small oven size, 229" inflatable  
Simply part # 1299  
Alkar part # 45132



### Gasket Retainer

Used for small oven door gasket

Simply part # 1302  
Alkar part # 45102



### Gasket, 1" x 2" Silicone Sponge

Simply part # 1249  
Alkar part # 15020



# Batch Equipment Parts

## Latch, Door

Stainless steel assembly used on inside of oven door

Simply part # 1310

Alkar part # 70353



## Nozzle, Brass 1/4"

Oven atomizing nozzle

Simply part # 1328

Alkar part # 66287



## Nozzle, 1/4" Stainless Steel

Cold shower spray nozzle

Simply part # 1327

Alkar part # 65990



# Batch Equipment Parts

## Clippard Valve

Used with inflatable door seal

Simply part # 1257

Alkar part # 66296



## Air Flow Switch

Pressure activated to provide safety shutdown

Simply part # 1258

Alkar part # 30012



## Flowmeter

Monitors water flow to the psychrometer pan

Simply part # 1261

Alkar part # 25109



## Batch Equipment Parts

### **Wet Bulb Sock, 4-1/2" x 11-1/2"**

Made of 100% cotton for accurate wet bulb reading

Simply part # 1276

Alkar part # 50048



### **Wet Bulb Sock, 5-1/2" x 5-1/2"**

Made of 100% cotton for accurate wet bulb reading

Simply part # 1235

Alkar part # 50044



### **Wet Bulb Sock, 3" x 5-1/2"**

Made of 100% cotton for accurate wet bulb reading

Simply part # 1236

Alkar part # 50040



### **Wet Bulb Sock, 6" x 6"**

Made of 100% cotton for accurate wet bulb reading

Simply part # 1234

Alkar part # 50041





# Batch Equipment Part

## Thermocouple, Type J

Monitors internal temperature of product

Simply part # 1313

Alkar part # 25121



## Probe, RTD Insertion

Monitors internal temperature of product

Simply part # 1233

Alkar part # 25163



## Probe, RTD Wet/Dry Bulb

Single element sensor

Simply part # 1254

Alkar part # 25201



## Probe, RTD

Used to check internal temperature of hot dogs

Simply part # 1298

Alkar part # 25293





# Batch Equipment Part

## Spark Ignitor

For Maxon models 405, 408, 415, 425, and 435

Simply part # 1259

Alkar part # 30632



## Flame Rod

For Maxon models 405, 408, 415, 425, and 435

Simply part # 1260

Alkar part # 40097



## Fan Blade, 18"

Simply part # 1238

Alkar part # 40148



## UV Scanner

Used in combustion safeguard chassis

Simply part # 1297

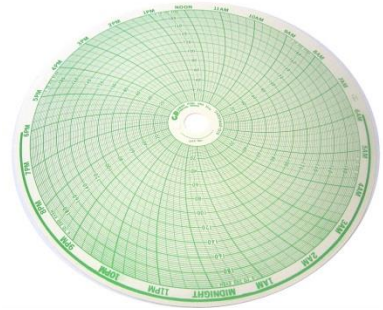
Alkar part # 31081



# Batch Equipment Part

## Chart, 24001660- 010

Simply part # 1311



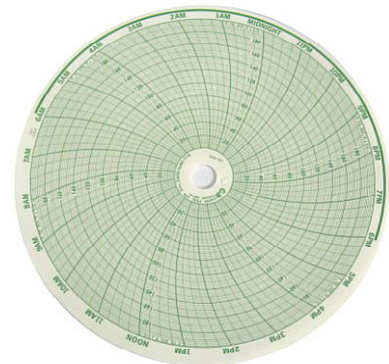
## Chart, 24001660- 096

Simply part # 1312  
Alkar part # 25136



## Chart, 24001660-114

Simply part # 1283  
Alkar part # 25139



# Alkar Continuous Line Parts

## Smokehouse Chain, In-line

C2082 316SS

Fully assembled with carrier blocks for 6" centers. Also available in 4" centers

Simply part # 1232

Alkar part # 83500



## Carrier Block – Closed

Used on Inline continuous chain

Simply part # 1228

Alkar part #35253

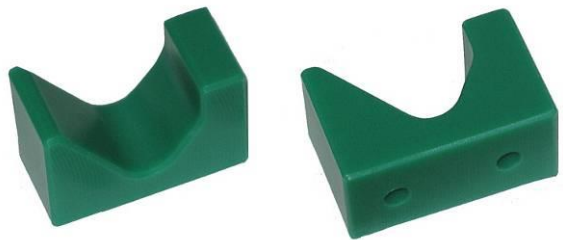


## Carrier Block – Open

Used on Inline continuous chain

Simply part # 1229

Alkar part # 35145



## Screw HHCS2-14 x 7/16

Used on Inline continuous chain

Simply part # 1230

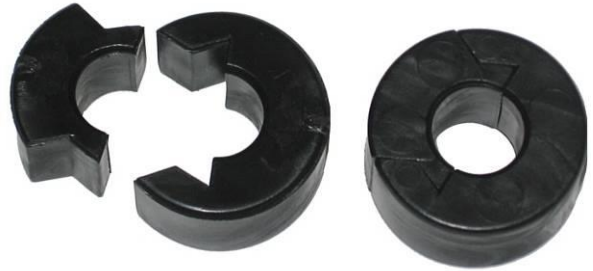
Alkar part # 10498



# Alkar Continuous Line Parts

## Split Roller, Black Delrin 2 piece snap-on design

Simply part # 1251  
Alkar part # 35496



## Link, Chain Carrier Half Used on Inline continuous chain

Simply part # 1255  
Alkar part # 35564



## Link, Chain Carrier Master Used on Inline continuous chain

Simply part # 1256  
Alkar part # 35137



## Stick Return Chain

Simply part # 1240  
Alkar part # 35559



# Alkar Continuous Line Parts

## Chain, Serpentine 304 SS & 316 SS

#80, #100, & #120

Simply part # - Call for quote



## Meat Stick, 61" 17-4 PH

Electro polished, used on Inline systems

Simply part # 1231

Alkar part # 75231



# KSI Continuous Line Parts

## KSI X-348 Assembled Chain

Constructed of precipitation hardened S.S.

9" Product Spacing

Simply part # 1281

12" Product Spacing

Simply part # 1282



## Wheel, Trolley 2-1/4" with cage

Simply part # 1271

Alkar/KSI part # 950550



## Wheel, Trolley 2-1/4" without cage

Simply part # 1289

Alkar/KSI part # 950552



## Bracket 3"

Simply part # 1266

Alkar/KSI part # 95051



# KSI Continuous Line Parts

## Center Link 3"

Simply part # 1267  
Alkar/KSI part # 95052



## Side Link 3"

Simply part # 1268  
Alkar/KSI part # 95053



## Rivet, 1/2"

Simply part # 1269  
Alkar/KSI part # 95054



## "H" Attachment, side link

Simply part # 1291  
Alkar/KSI part # 95057





# KSI Continuous Line Parts

## **“H” Attachment, center link**

Simply part # 1293

Alkar/KSI part # 95058



## **“H” Attachment, wheel bracket**

Simply part # 1292

Alkar/KSI part # 95056



## **Spacer**

Simply part # 1294

Alkar/KSI part # 95061



## **Bracket Bolt/Nut**

Simply part # 1295

Alkar/KSI part # 95059



## **Washer, chain pin**

Simply part # 1290

Alkar/KSI part # 95905



# KSI Continuous Line Parts

## Cotter pin

Simply part # 1287  
Alkar/KSI part # 95904



## Cat Chain, Mild Steel with connecting links

# 160 with S.S. dogs

Simply part # 1278  
Alkar/KSI part # 95101



## Cat Chain, Stainless Steel with connecting links

# 160 with S.S. dogs

Simply part # 1288  
Alkar/KSI part # 95102



# RapidPak Parts

## Chain # 60 HP (hollow pin, darcotized)

Simply part # 1227

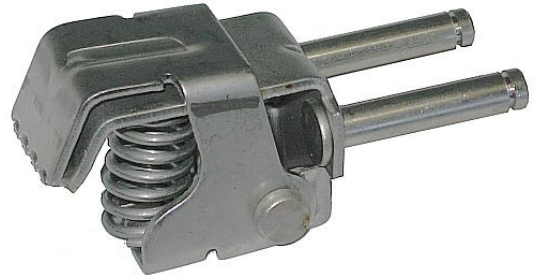
RapidPak part # 02015



## Gripper Clip / Spring Assembled

Simply part # 1225

RapidPak part # 10493



## Gripper Clip

Simply part # 1223

RapidPak part # 00175



## Spring, Heavy Duty

Simply part # 1224

RapidPak part # 00176



# RapidPak Parts

## Retaining Clip

Simply part # 1226  
RapidPak part # 00188



## Circular Rotary Knife – Scalloped Slitter

Simply part # 1413  
RapidPak part # 02243



## Contour Cutter Blade

Simply part # 1412  
RapidPak part # 00186



# RapidPak Parts

## Chain Clip Opening Guide Track

Simply part # 1404  
RapidPak part # 35810



## Chain Clip Opening Guide Wear Strip

Simply part # 1414



## Chain Clip Opening Guide Base

Simply part # 1415



## Spacer, Lay in Roller

Simply part # 1400  
RapidPak part # 02032



## RapidPak Parts

### Exit Clip Opener Scrap Gun Left

Simply part # 1403  
RapidPak part # 02424



### Exit Clip Opener Scrap Gun Right

Simply part # 1402  
RapidPak part # 02425



### Chain Guide Exit Clip Opener

Simply part # 1408  
RapidPak part # 02266



### Clip Chain Toothless Idler

Simply part # 1401  
RapidPak part # 50816



# RapidPak Parts

## Clip Chain Bottom Opening Ramp, Entry End

Simply part # 1407  
RapidPak part # 60869



## Cam Track - Long

Simply part # 1406  
RapidPak part # 02415



## Cam Track - Short

Simply part # 1405  
RapidPak part # 60873



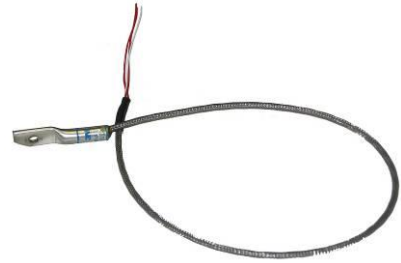


# RapidPak Parts

## Sensor, RTD (18")

Simply part # 1410

RapidPak part # 01115



## Heater, 5" 240V 750W, 1/2" Rd

Simply part # 1430

RapidPak part # 00907



## Heater, 5-1/2" 240V 750W, 1/2" Rd

Simply part # 1435

RapidPak part # 00909



## Heater, 6-1/2" 240V 750W, 1/2" Rd

Simply part # 1431

RapidPak part # 00913



## RapidPak Parts

### Heater, 8" 240V 750W, 1/2" Rd

Simply part # 1432

RapidPak part # 01146



### Heater, 9" 240V 750W, 1/2" Rd

Simply part # 1434

RapidPak part # 01047



### Heater, 9-1/2" 240V 750W, 1/2" Rd

Simply part # 1433

RapidPak part # 00509



# Product Trucks, Trees, Cages & Towers

## Standard Meat Truck

### 4 Station

Simply part # 1273

Alkar part # 45022

### 5 Station

Simply part # 1274

Alkar part # 45066



## Custom Design Product Cages

Simply Manufacturing will custom design product cages to meet your requirements of size, product loading, and weight capacity



# Product Trucks, Trees, Cages & Towers

**Bolo Rack**



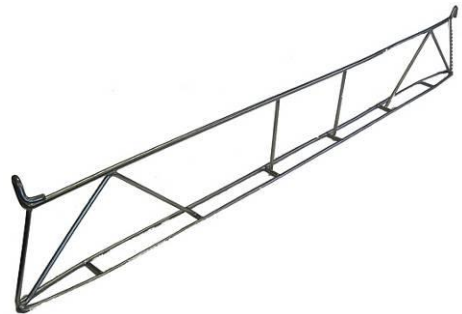
**Ham Press Tower**



# Product Sticks

**KSI, 46"**

Simply part # 1277



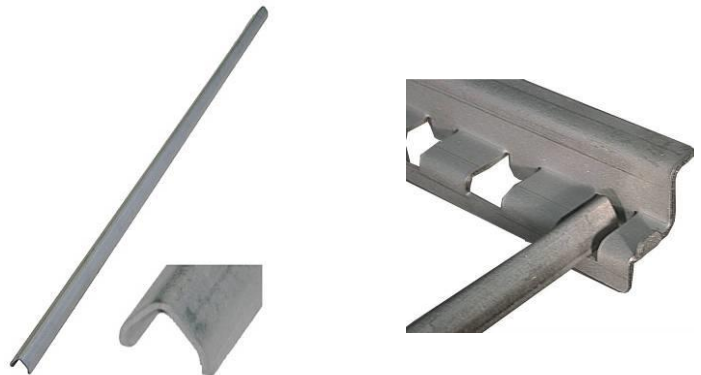
**Julian / T-Con**



**V-Type, 42", 14 Gauge S.S.**

Simply part # 1237

Alkar part # 45099



# Product Sticks

## Meat Stick, 61" 17-4 PH

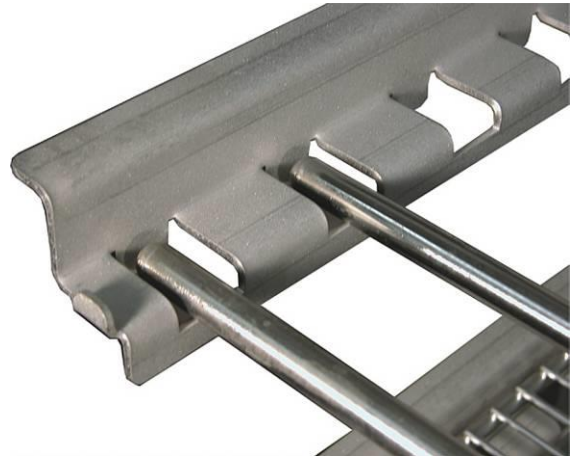
Electro polished, used on Inline continuous systems

Simply part # 1231

Alkar part # 75231



## Meat Stick, 42", 17-4 PH



## Casters and Wheels

### **Caster, Rigid, Zinc / Maxim Wheel 8" x 2"**

Simply part # 1241

Alkar part # 75358



### **Caster, Swivel, Zinc / Maxim Wheel 8" x 2"**

Simply part # 1242

Alkar part # 75359



### **Caster, Rigid, S.S./ Maxim Wheel 8" x 2"**

Simply part # 1243



### **Caster, Swivel, S.S. / Maxim Wheel 8" x 2"**

Simply part # 1244





## Casters and Wheels

### **Caster, Rigid, S.S. / Nylon Wheel 8" x 2"**

Simply part # 1245



### **Caster, Swivel, S.S. / Nylon Wheel 8" x 2"**

Simply part # 1246



### **Caster Wheel Only, Maxim 8" x 2"**

Simply part # 1247



### **Caster Wheel Only, Nylon Wheel 8" x 2"**

Simply part # 1248



# Trolleys

## **Trolley, SS Heavy Duty**

3000 # capacity

Simply part # 1280



## **Wheel, 304 S.S. , 5/8" Bore, Closed Bearing**

Simply part # 1284



## **Wheel, 304 S.S. , 1/2" Bore, Closed Bearing**

Simply part # 1285



# Product Screens

## Screen, Mesh, 42" x 42" Std

Simply part # 1272

Alkar part # 45122

Also available in heavy duty per your requirements



## Custom Design Product Screens

Simply Manufacturing will work with you to design the exact screens that your operation requires for your specific needs and processing methods

